

Major Depressive Disorder: Pathogenesis and Medications

Chengyu, Zeng

CCME@PKU

Oct. 17, 2020

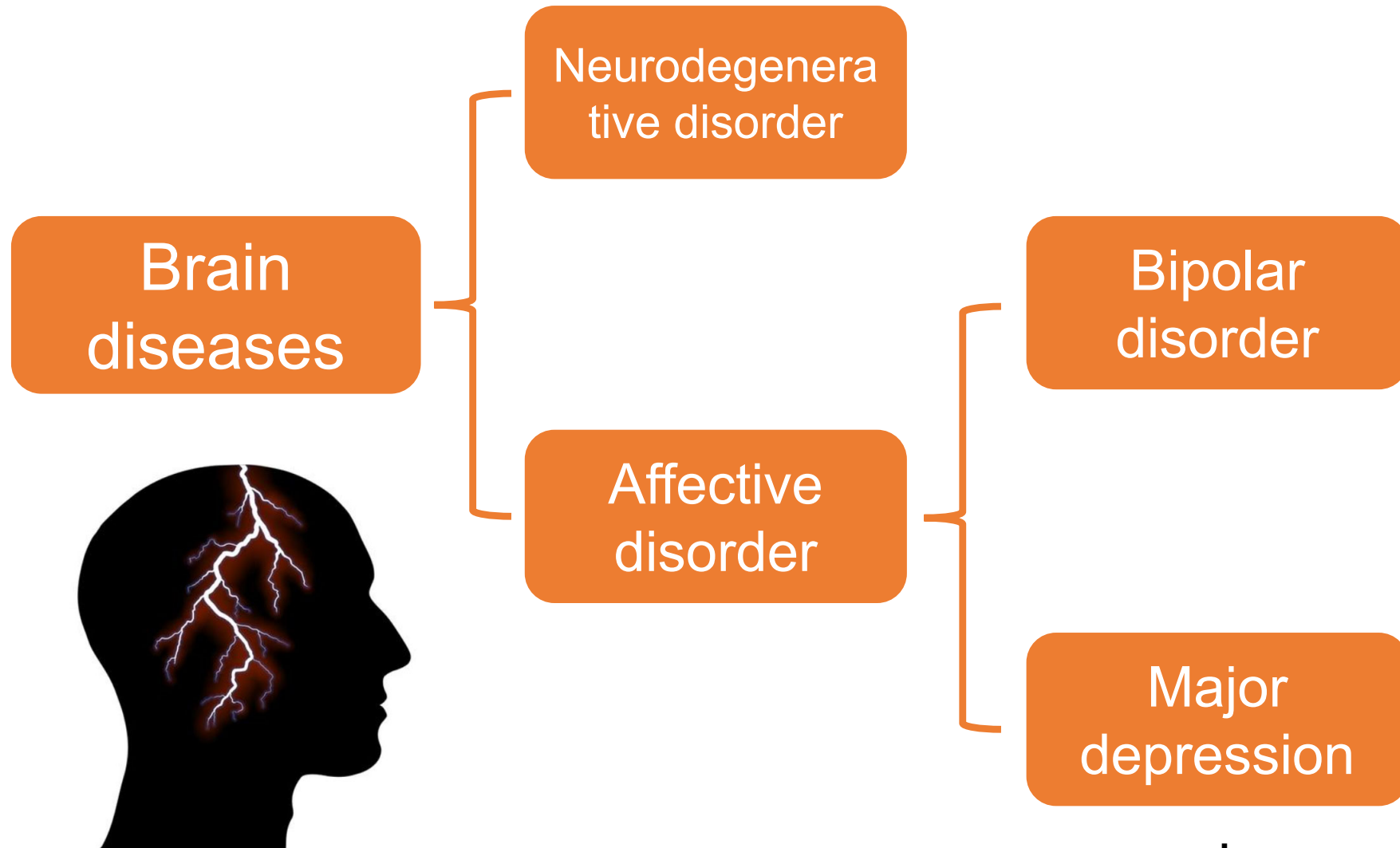
Outline

- Diagnostic Criteria
- Pathogenesis hypothesis
 - The monoamine-deficiency hypothesis
 - The glutamatergic dysfunction hypothesis
 - Brain-derived neurotrophic factor
 - The hypothalamic–pituitary–cortisol hypothesis
- Antidepressant Treatments
 - Electroconvulsive therapy & Cognitive behavioral therapy
 - Monoamine oxidase inhibitors (MAOIs)
 - TCAs, SSRIs, SNRIs, NDRIs and SARIs
 - Other medications

Outline

- Diagnostic Criteria
- Pathogenesis hypothesis
 - The monoamine-deficiency hypothesis
 - The glutamatergic dysfunction hypothesis
 - Brain-derived neurotrophic factor
 - The hypothalamic–pituitary–cortisol hypothesis
- Antidepressant Treatments
 - Electroconvulsive therapy & Cognitive behavioral therapy
 - Monoamine oxidase inhibitors (MAOIs)
 - TCAs, SSRIs, SNRIs, NDRIs and SARIs
 - Other medications

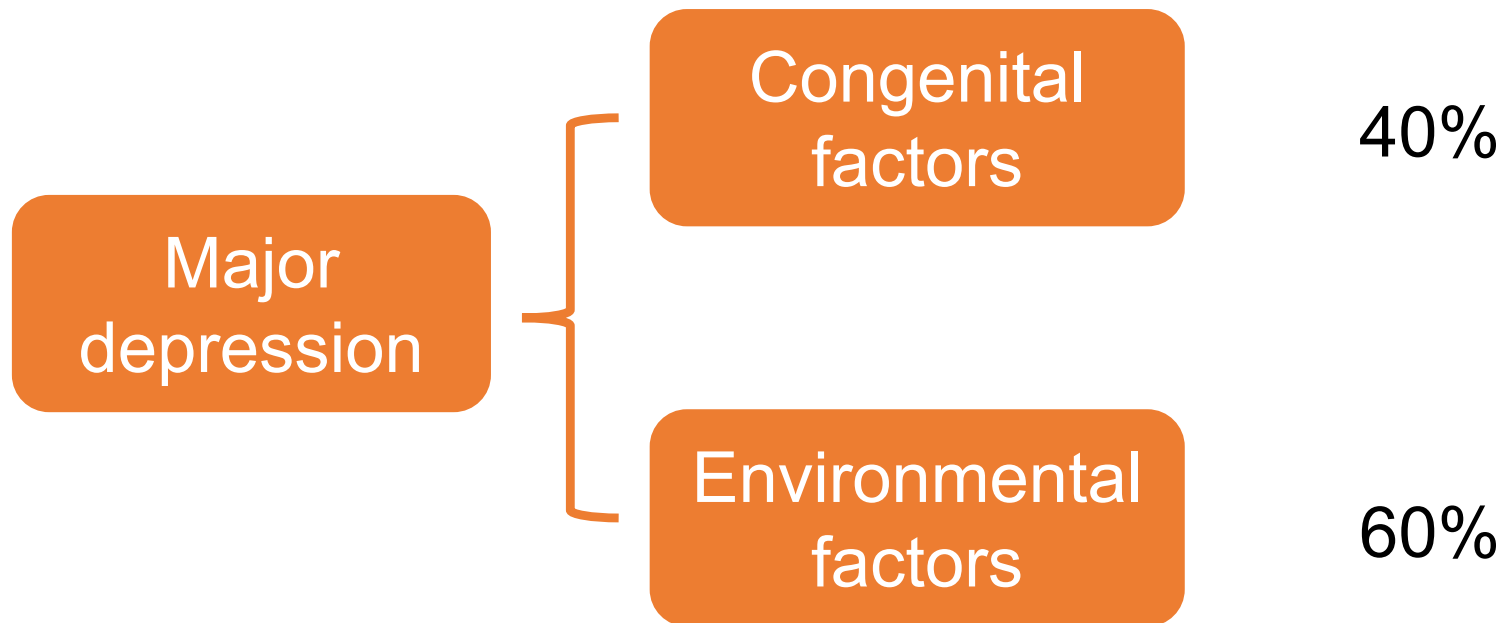
Introduction



Major Depressive Disorder

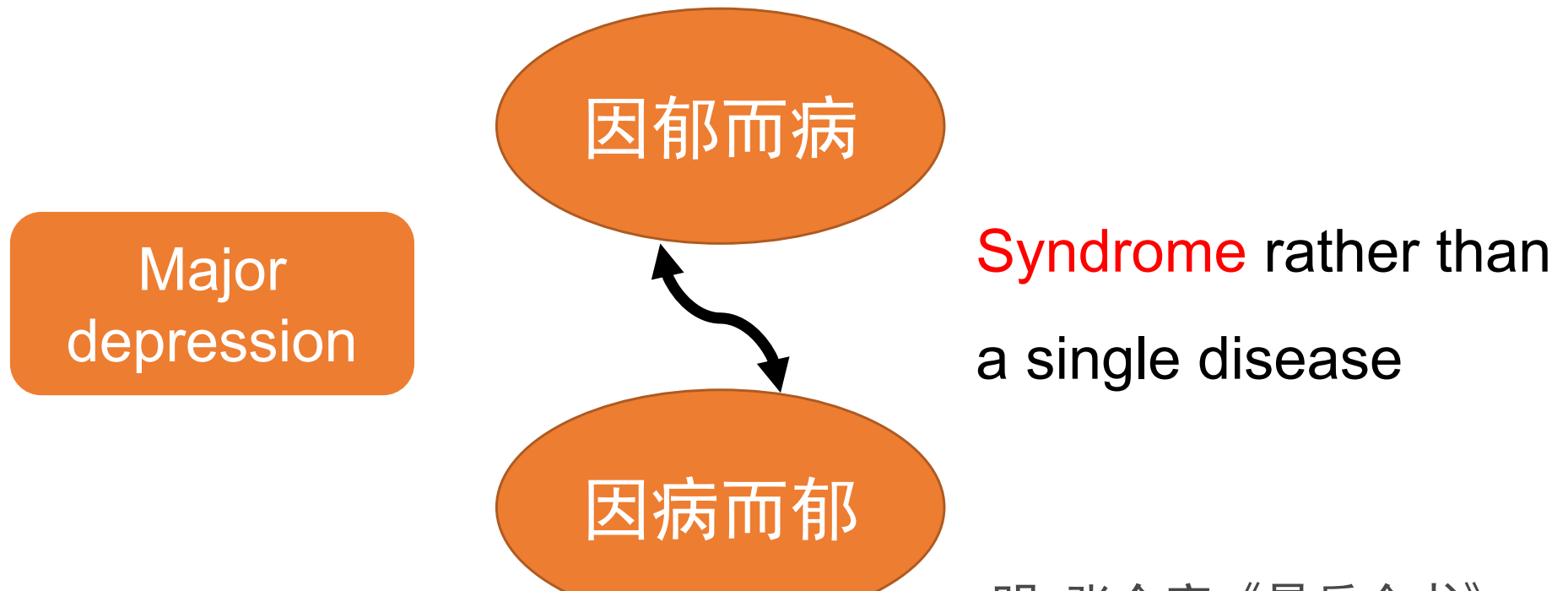
“郁极乃发，待时而作也。”

——《黄帝内经·素问 六元正纪大论篇》



Major Depressive Disorder

- 350 million in the world, less cured
- 1 million death per year, or complications
- 90 million in China (1/14)
- young/old people, pregnant women...



Diagnostic Criteria

- Having a depressed mood
- Loss of interest or pleasure in activities once enjoyed
- Changes in appetite
- Trouble sleeping or sleeping too much
- Loss of energy or increased fatigue
- Increase in purposeless physical activity or slowed movements
- Feeling worthless or guilty
- Difficulty thinking, concentrating, or making decisions
- Thoughts of death or suicide

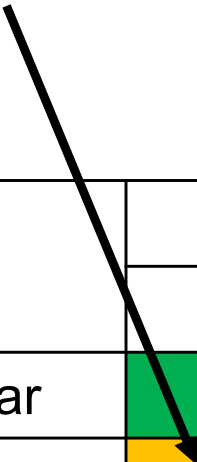
Sorrowing Old Man
Vincent Willem van Gogh
(1853—1890)



Clinical research

Problems :

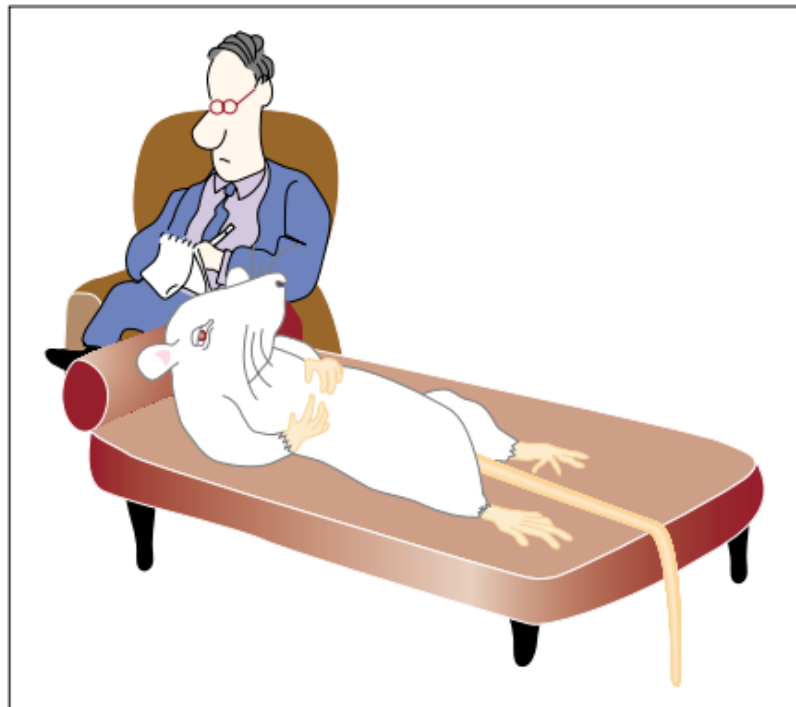
- Helplessness (patients)
 - Difficulties in diagnosis
 - Long treatment cycle (human)
 - Uncertain **pathogenesis**
 -
- Need to understand in **many ways** !



| Difficulty | | Drug mechanisms | |
|--------------|---------|-----------------|---------|
| | | Clear | Unknown |
| Pathogenesis | Clear | Easy | Hard |
| | Unknown | Hard | Hell |

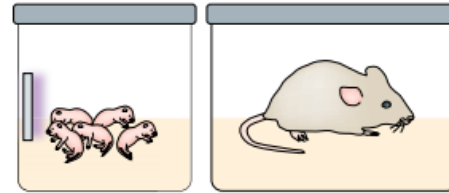
Rodent models in depression research

- Create depressed rodent
- Observing behavior



John, F. C.; Athina, M.; Irwin, L.
Trends Pharmacol. Sci. **2002**, 23, 238.

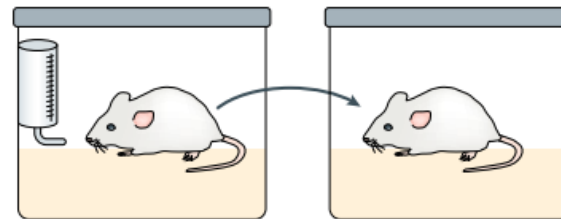
a Early life stressors



b Learned helplessness



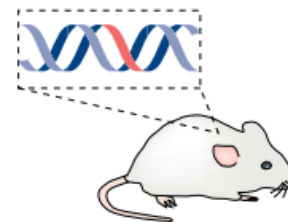
c Drug withdrawal



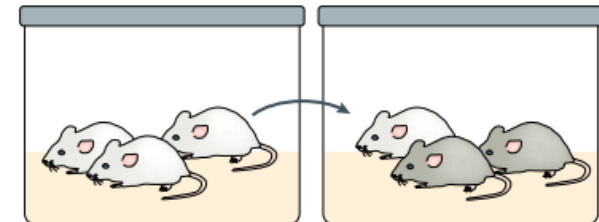
d Corticosterone manipulation or immune activation



e Genetic modification



f Social instability



g Social transmission of stress

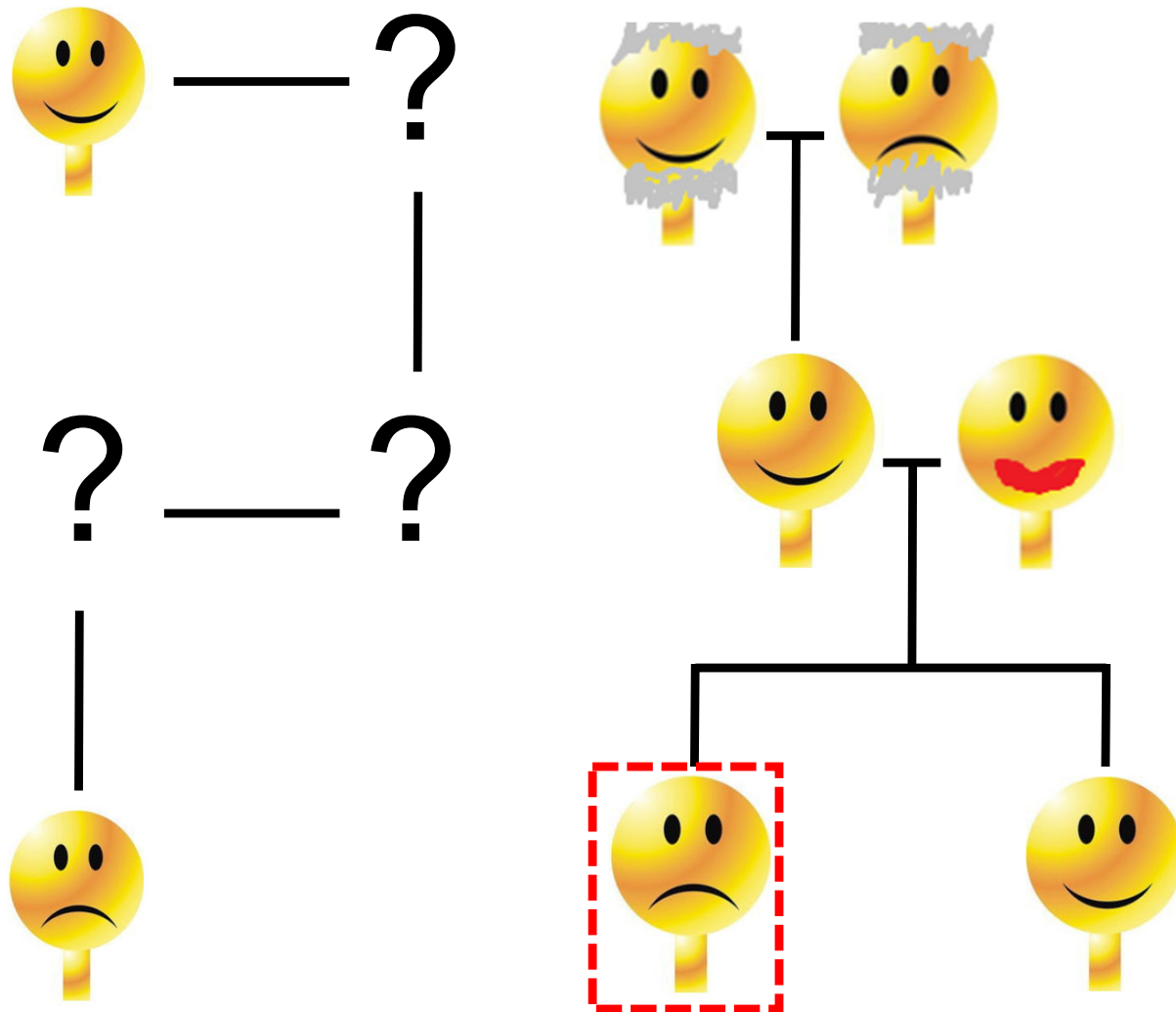


h Social defeat stress



Summary

Major Depressive Disorder (MDD):



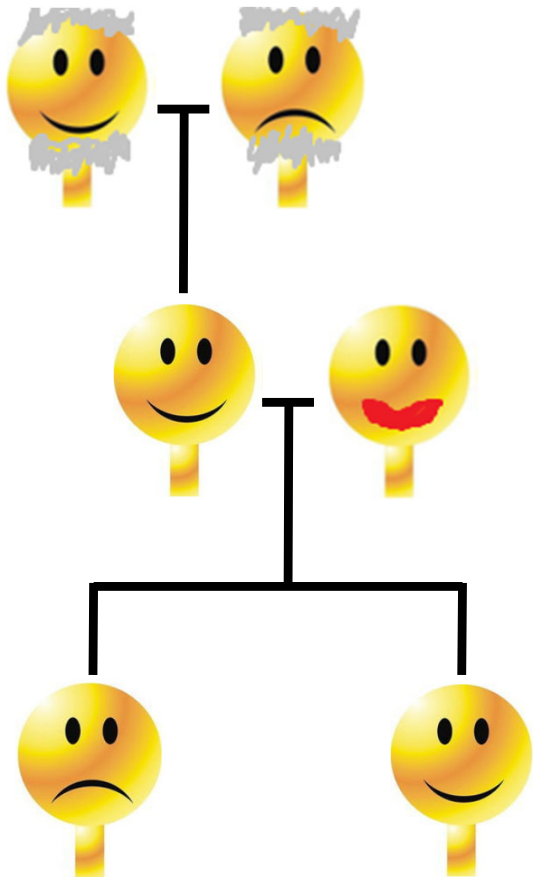
- ◆ Syndrome ?
- ◆ Genetics ?
- ◆ Difficulties...

Outline

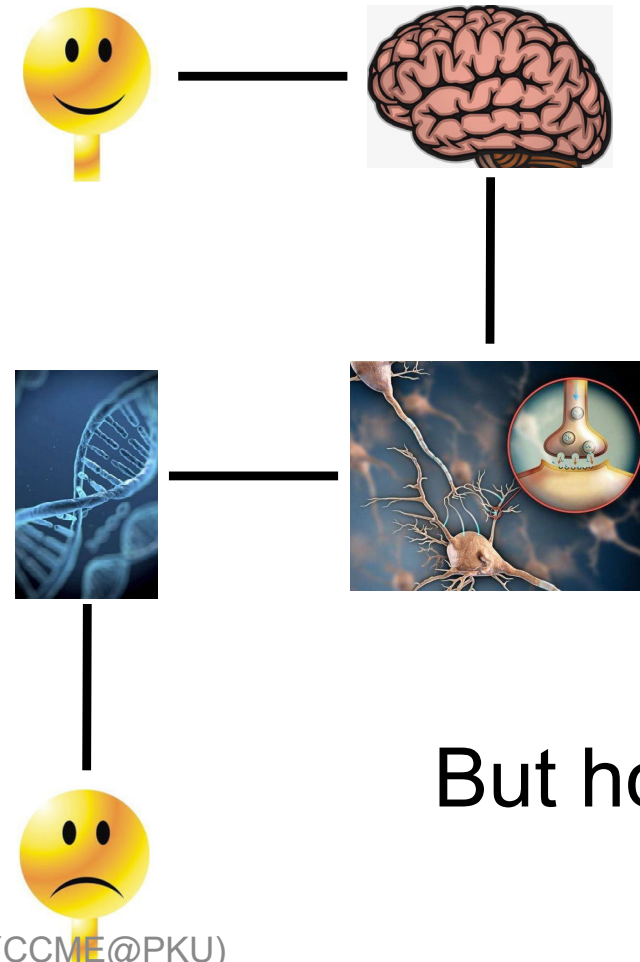
- Diagnostic Criteria
- Pathogenesis hypothesis
 - The monoamine-deficiency hypothesis
 - The glutamatergic dysfunction hypothesis
 - Brain-derived neurotrophic factor
 - The hypothalamic–pituitary–cortisol hypothesis
- Antidepressant Treatments
 - Electroconvulsive therapy & Cognitive behavioral therapy
 - Monoamine oxidase inhibitors (MAOIs)
 - TCAs, SSRIs, SNRIs, NDRIs and SARIs
 - Other medications

Pathogenesis hypothesis

Congenital factors

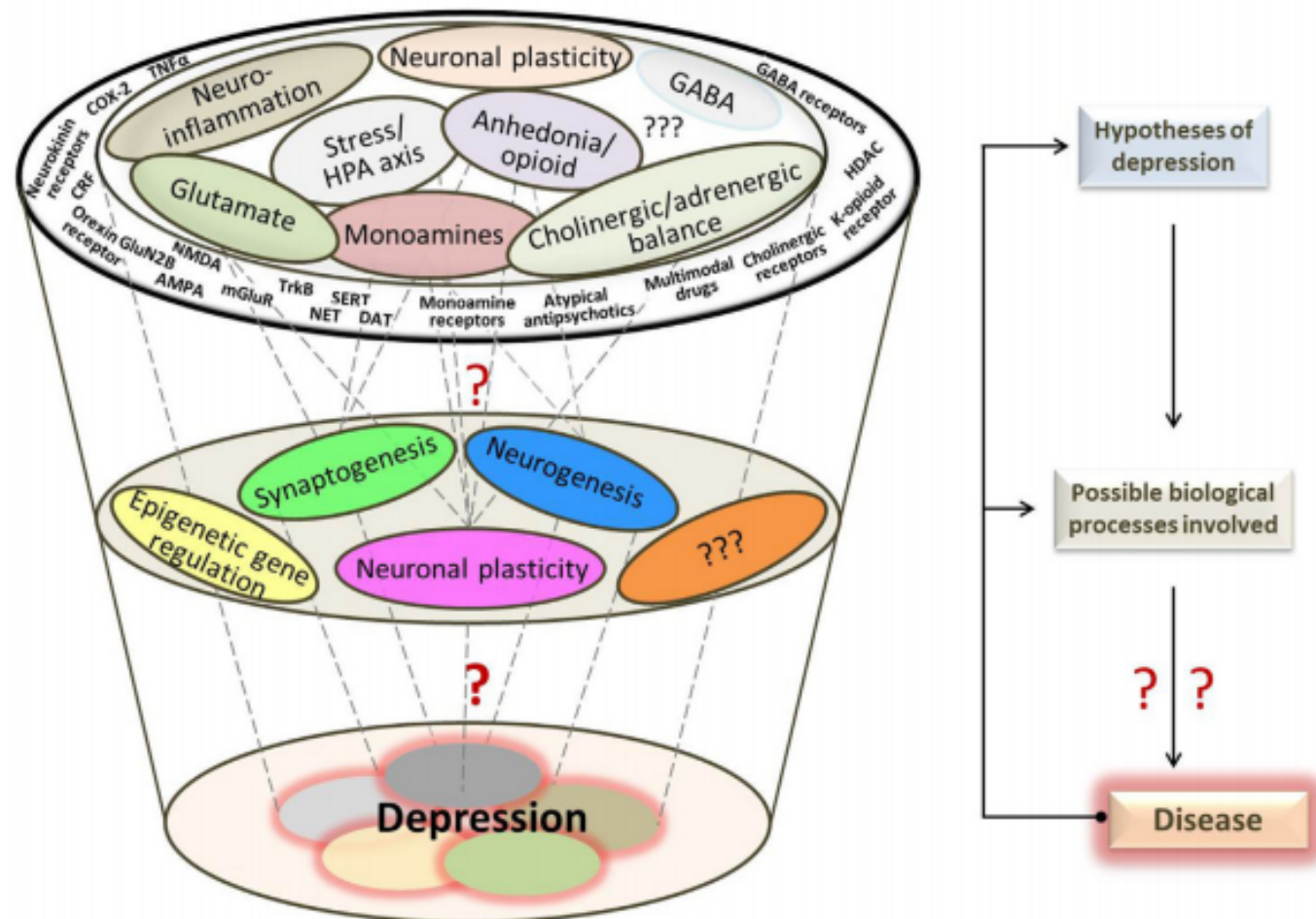


Environmental factors



But how ?

Pathogenesis hypothesis



Neurotransmitters

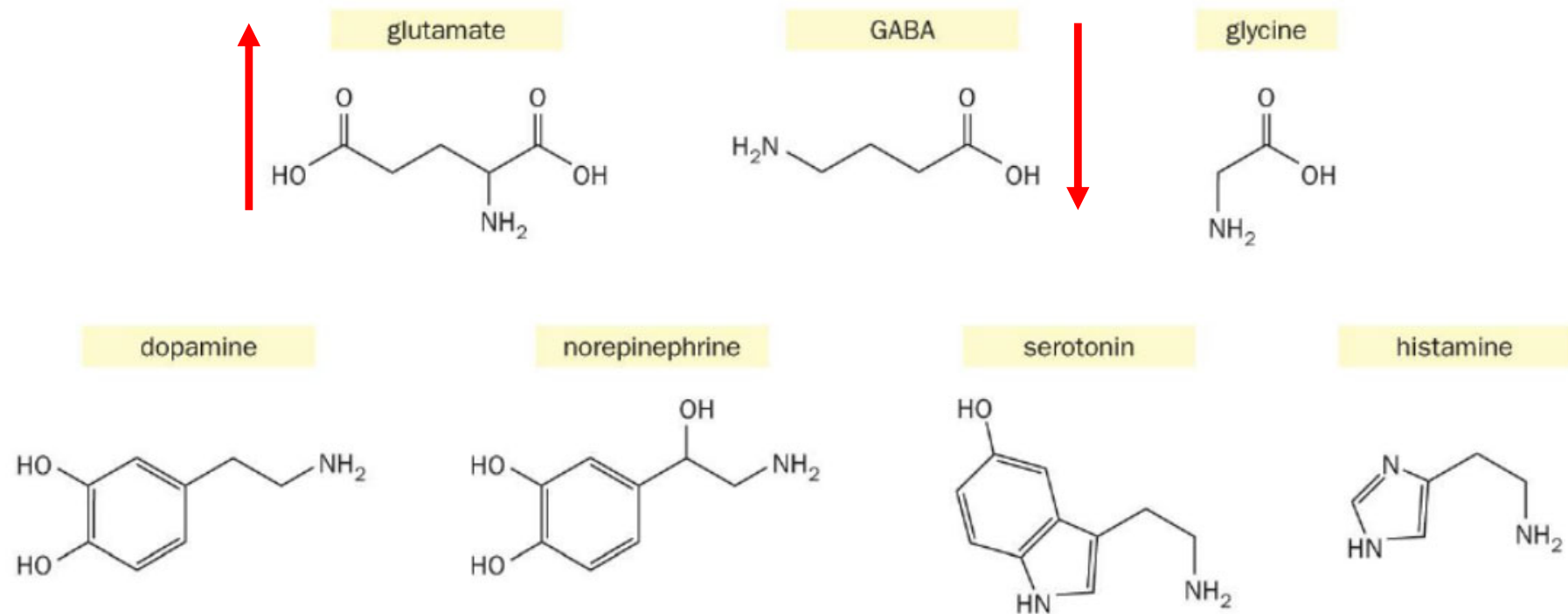


Figure 3-16 Principles of Neurobiology (© Garland Science 2016)

Neurotransmitters

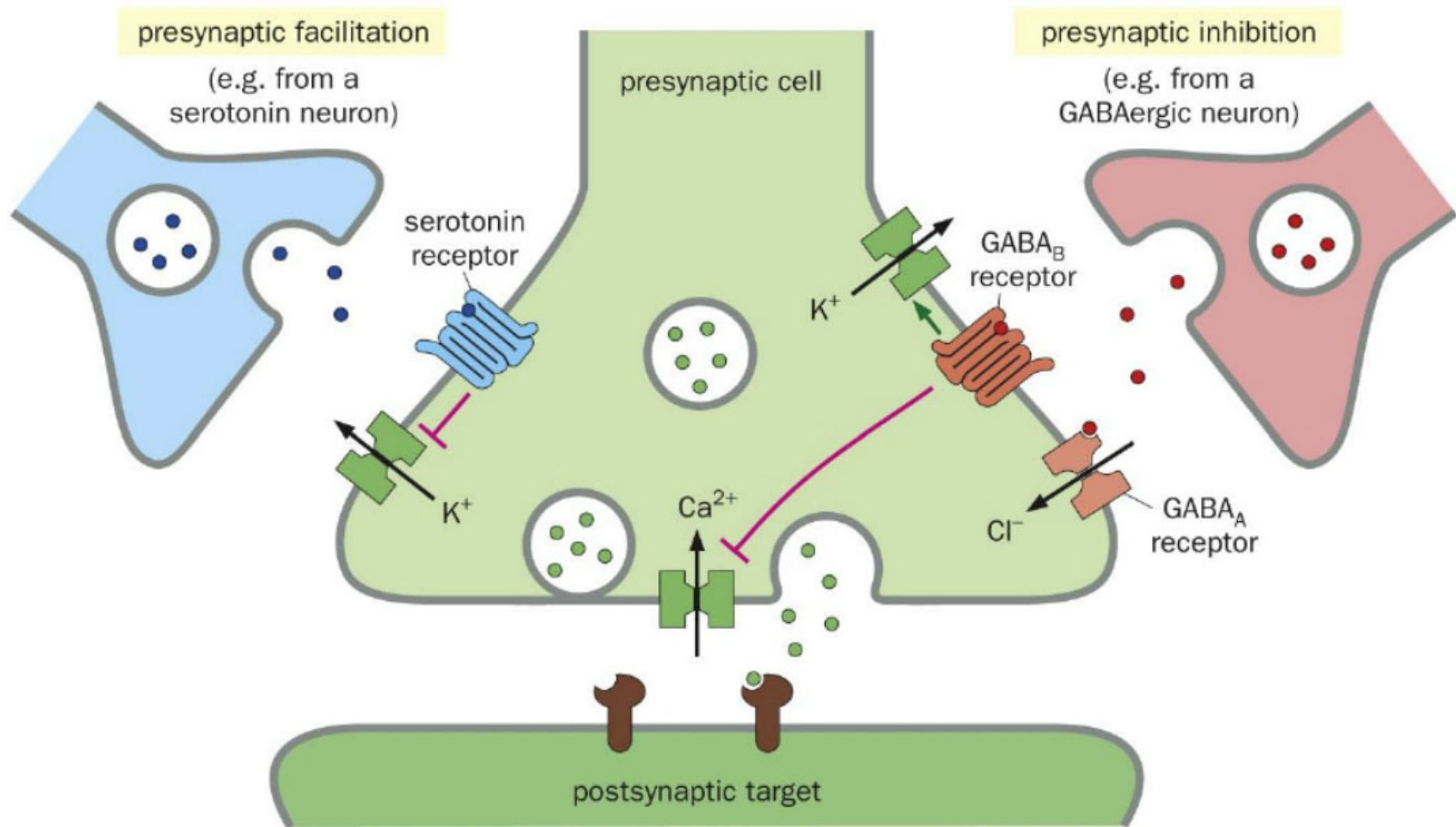


Figure 3-37 Principles of Neurobiology (© Garland Science 2016)

$K^+ \rightarrow Ca^{2+} \rightarrow \text{Neurotransmitters}$

Neurotransmitters

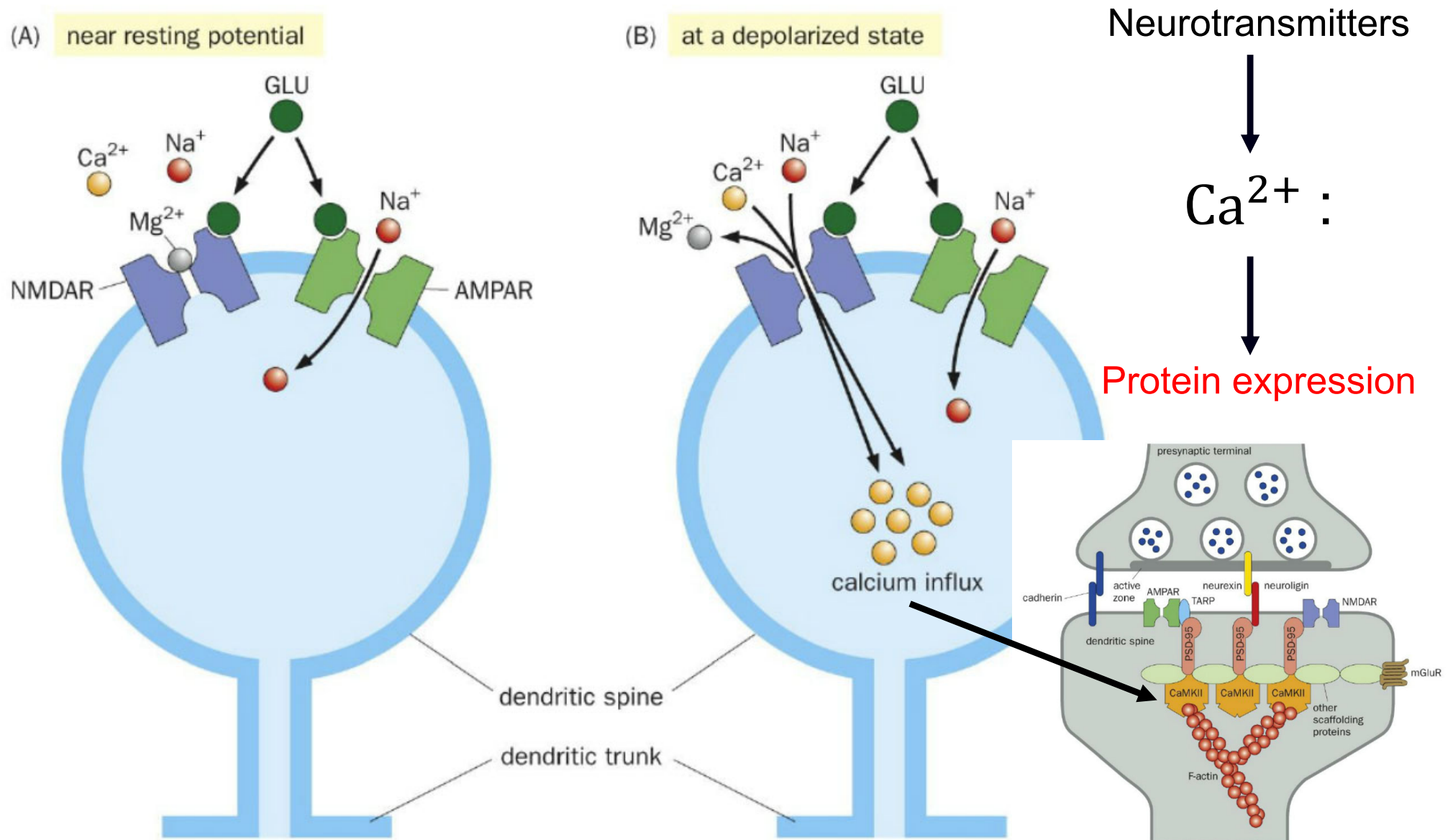
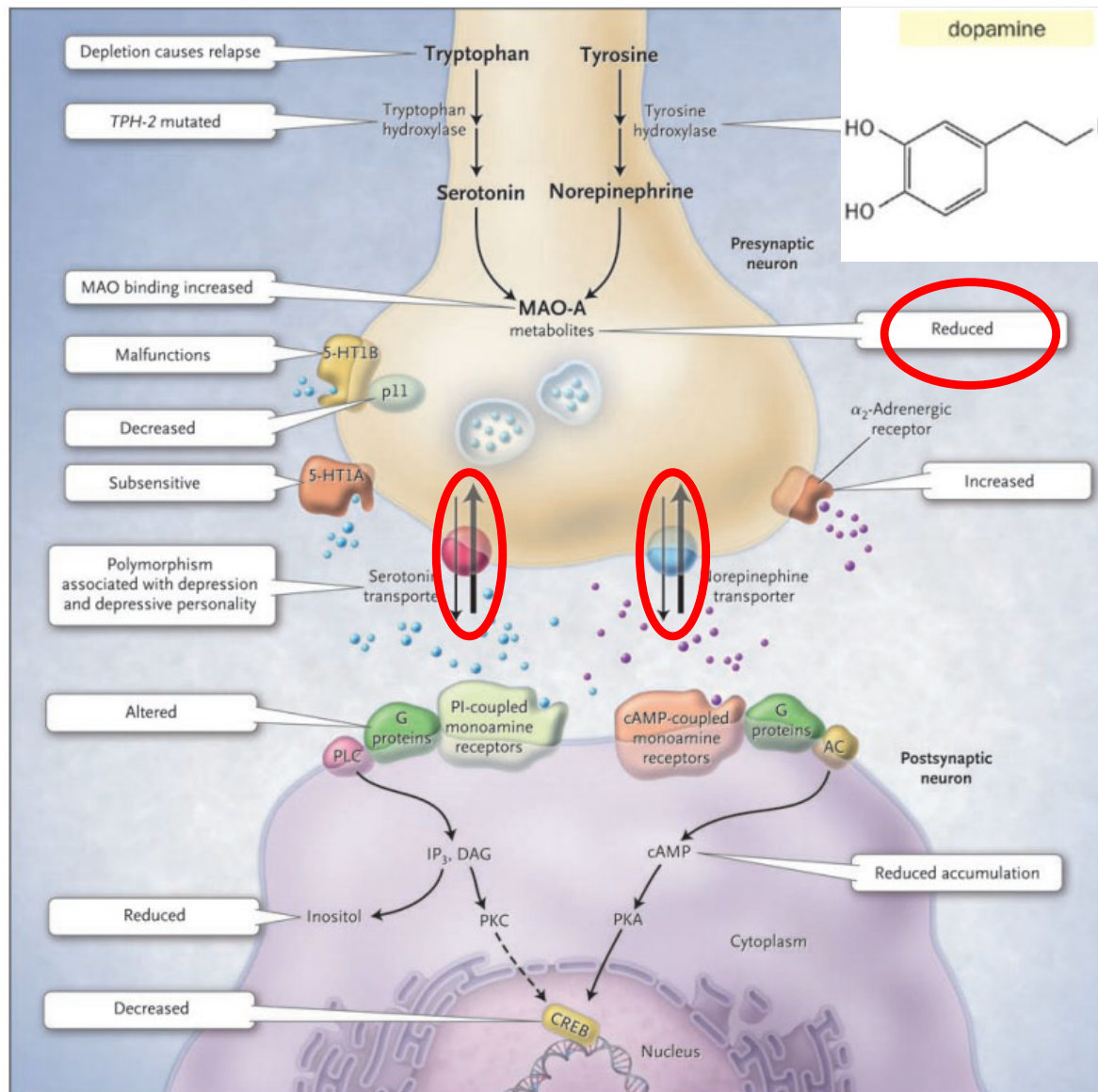


Figure 3-27 Principles of Neurobiology (© Garland Science 2016)

The monoamine-deficiency hypothesis



Environmental stimulation/
Genetic defects



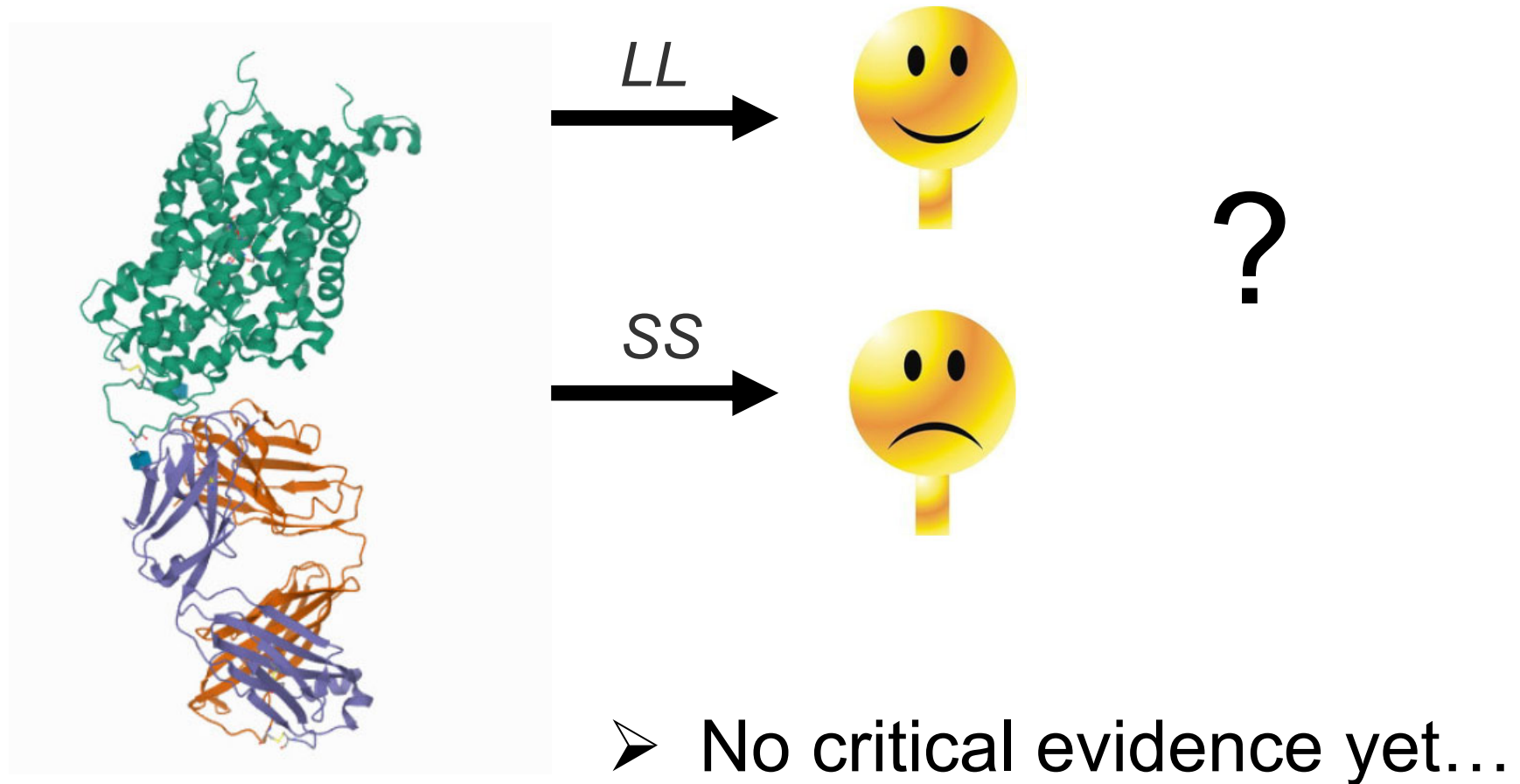
Monoamine-deficiency



Major Depressive Disorder (MDD)

Genetics

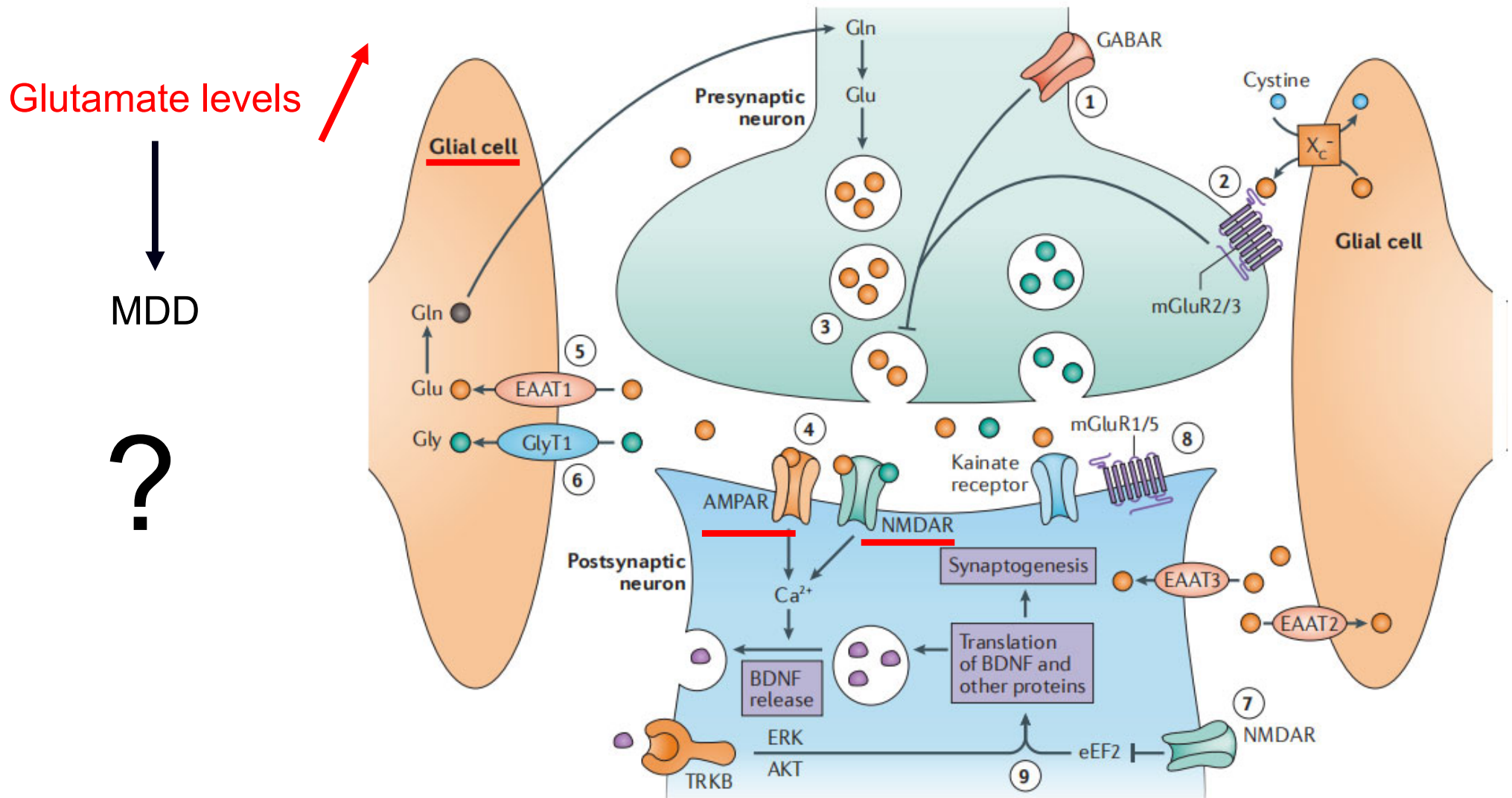
X-ray structure of the human serotonin transporter (SERT)



➤ No critical evidence yet...

Jonathan, A. C.; Eric, G. *Nat. Struct. Mol. Biol.* **2018**, 25, 170.

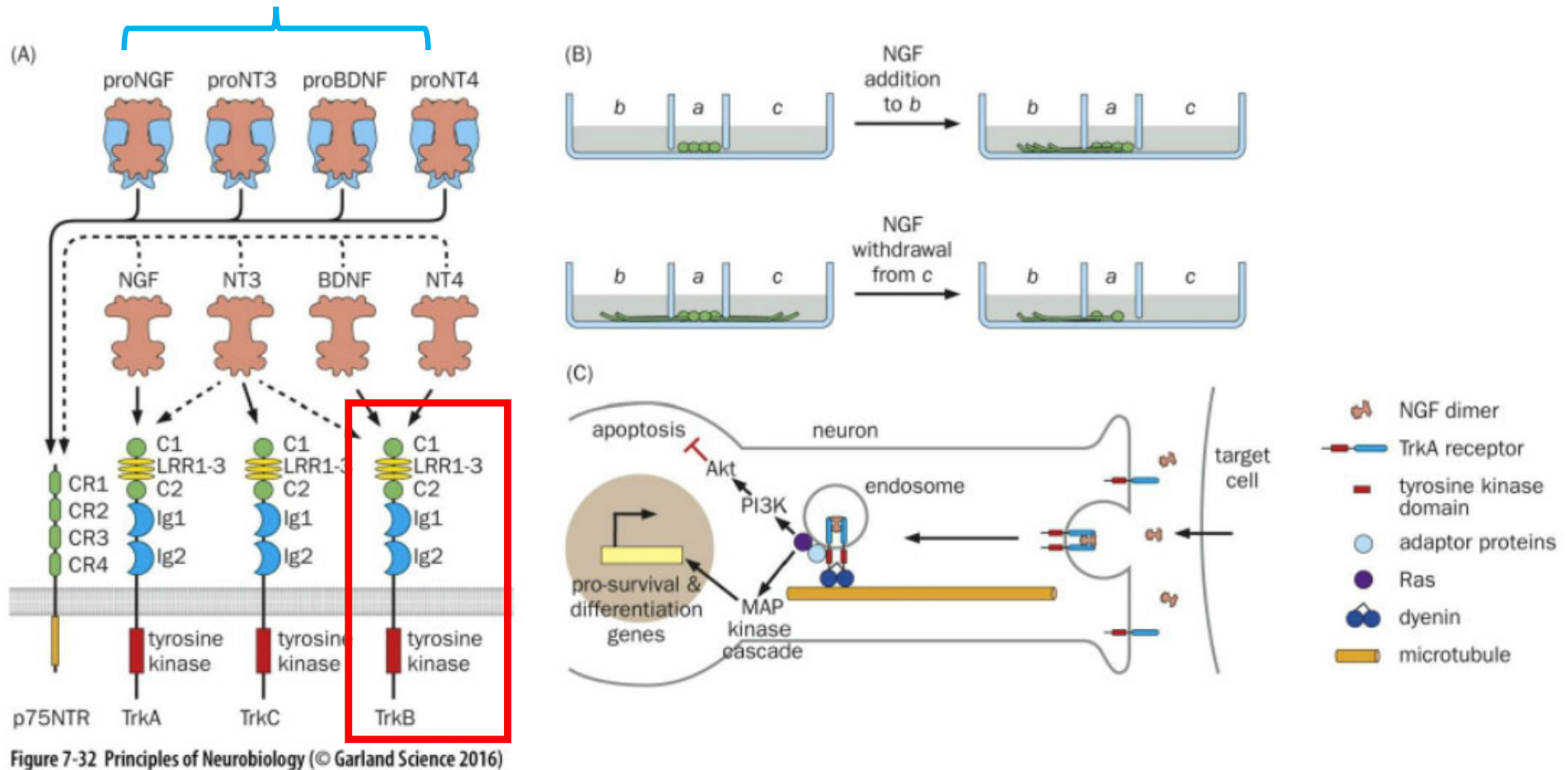
NMDA Receptor



James, W. M.; Chadi, G. A.; Sanjay J. M. *Nat. Rev. Drug Discov.* **2017**, 16, 472.

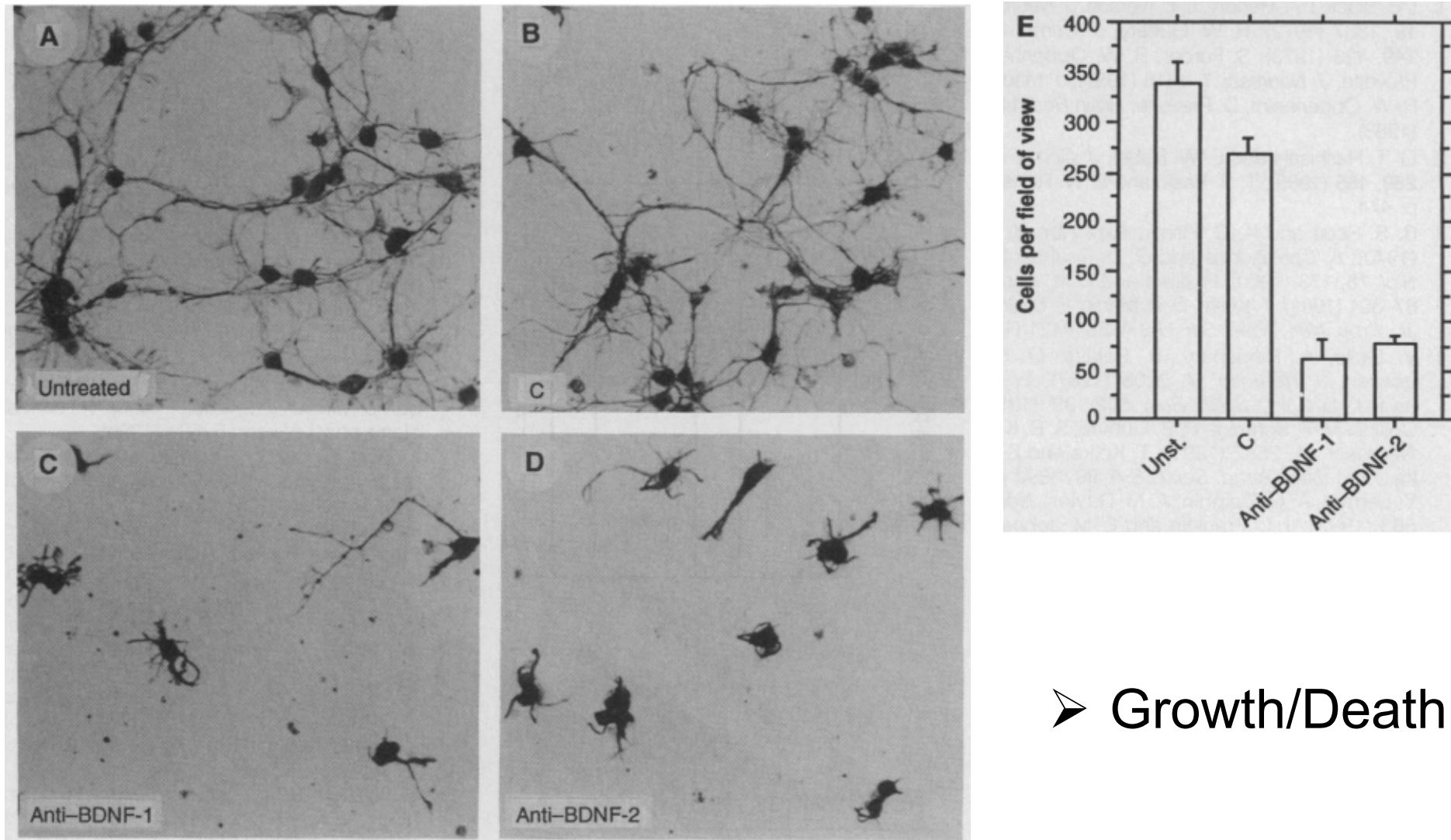
Brain-derived neurotrophic factor

NGF :



➤ Low BDNF in **Hippocampus** - Depression ?

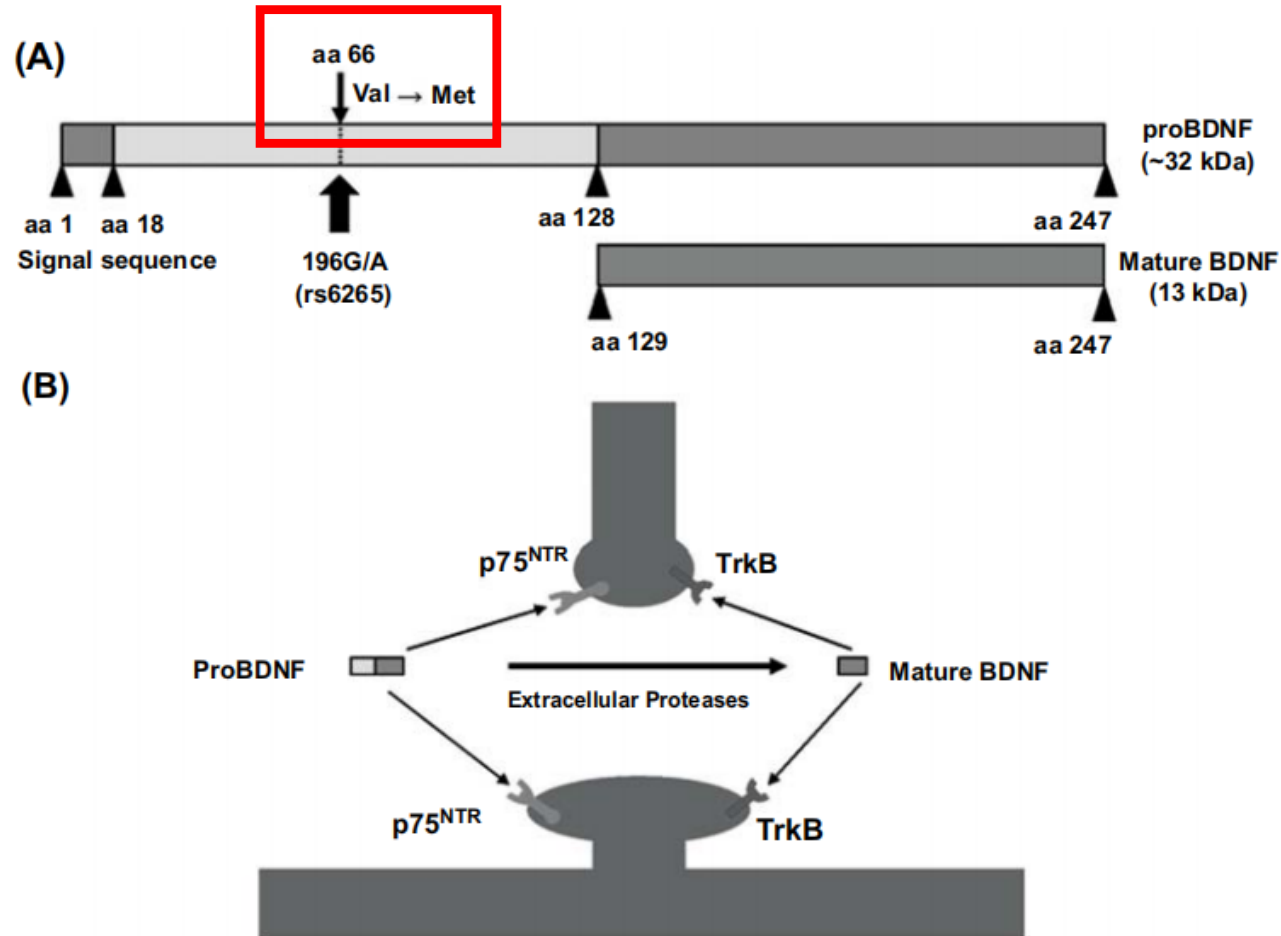
Brain-derived neurotrophic factor



➤ Growth/Death

Genetics

Both pro BDNF & BDNF can affect nerve cell

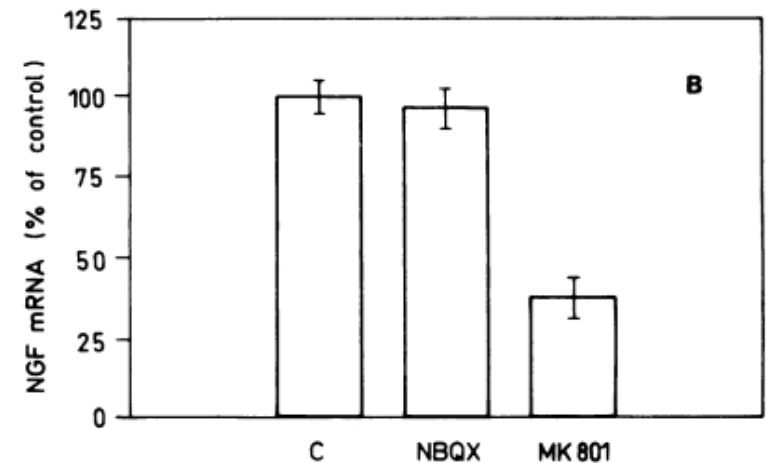
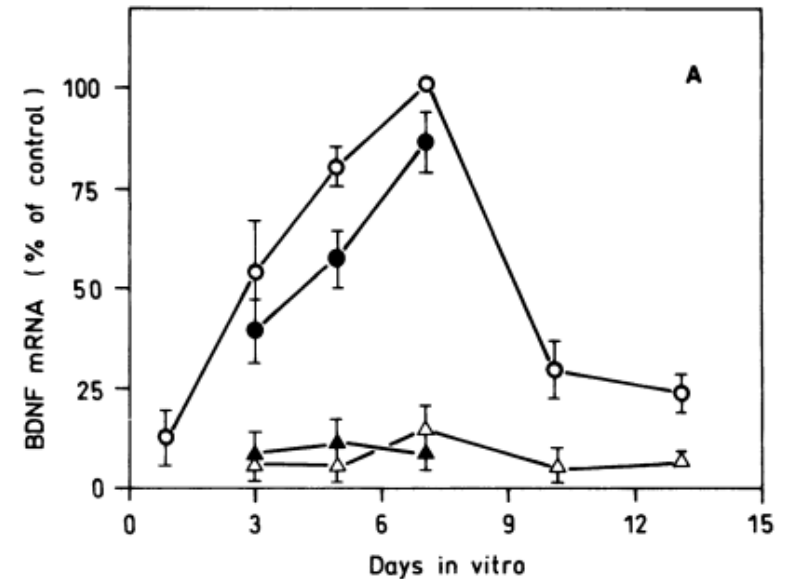
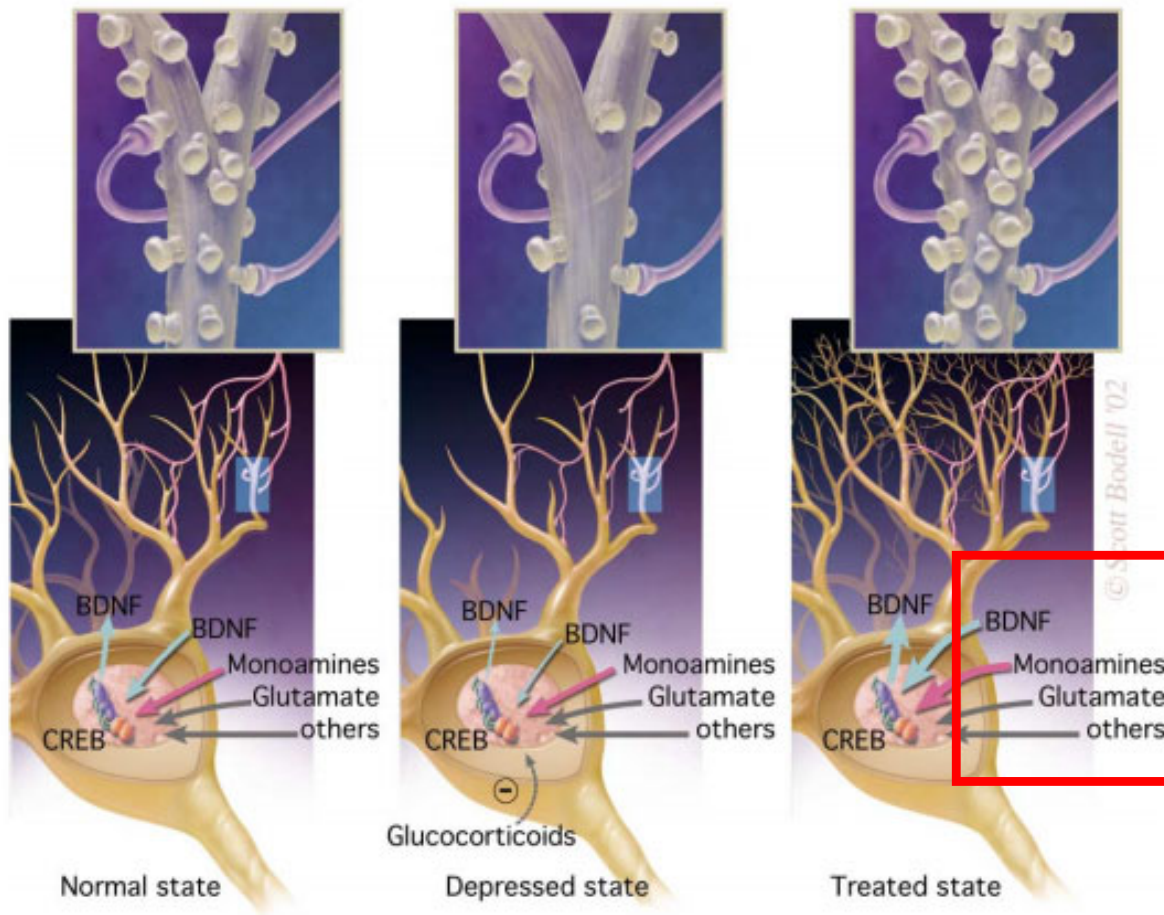


- Calcium controlled
- Upstream ?

Zhang, J. C.; Yao, W.; Hashimoto, K. *Curr Neuroparmacol* **2016**, 14, 721.

Upperstream

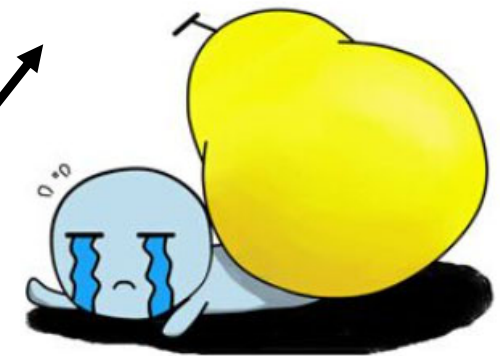
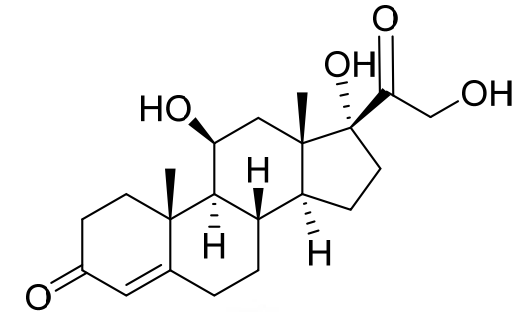
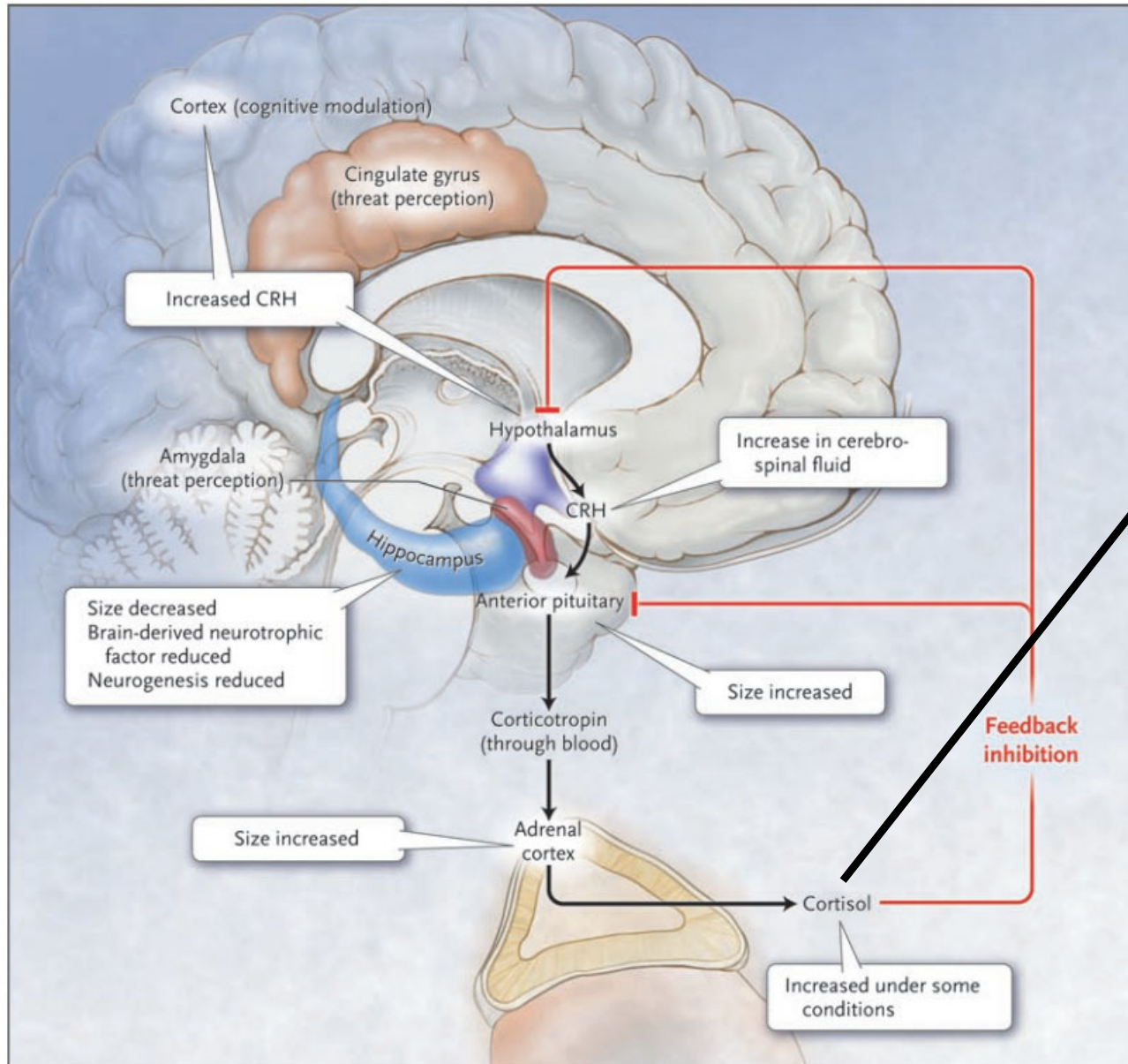
Complicated...



Eric, J. N.; Michel, B.; Ralph, J. D. Amelia, J. E.; Stephen, J. G.; Lisa, M. M. *Neuron* **2002**, 34, 13.

Francisco, Z.; Eero, C.; Hans, T.; Dan, L. *Proc. Natl. Acad. Sci.* **1991**, 88, 10037.

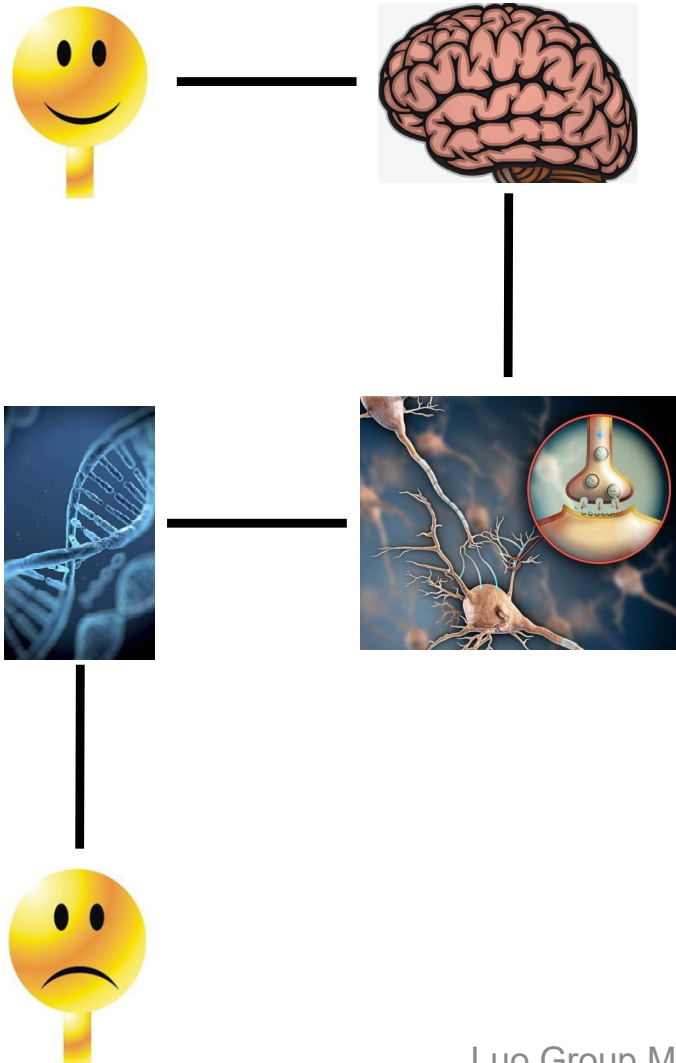
The HPC hypothesis



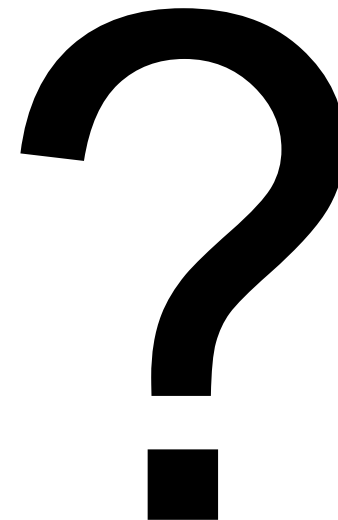
➤ Also cause other problems

Summary

Remain a mystery



- Nervous system
- Neurotransmitters
- Genetics
- Epigenetics
- ...



Outline

- Diagnostic Criteria
- Pathogenesis hypothesis
 - The monoamine-deficiency hypothesis
 - The glutamatergic dysfunction hypothesis
 - Brain-derived neurotrophic factor
 - The hypothalamic–pituitary–cortisol hypothesis
- Antidepressant Treatments
 - Electroconvulsive therapy & Cognitive behavioral therapy
 - Monoamine oxidase inhibitors (MAOIs)
 - TCAs, SSRIs, SNRIs, NDRIs and SARIs
 - Other medications

Physical & Behavioral

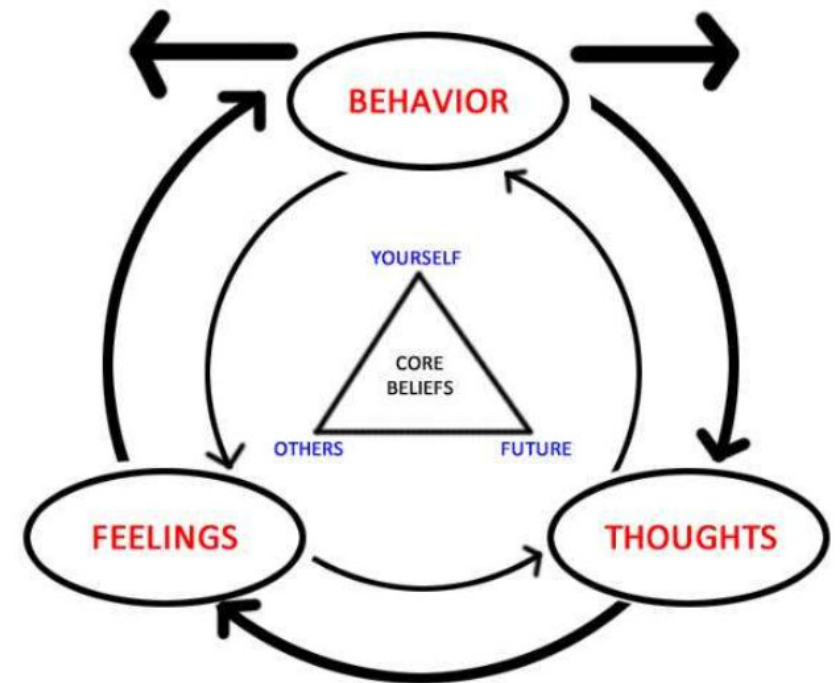
Electroconvulsive therapy



Ugo Cerletti

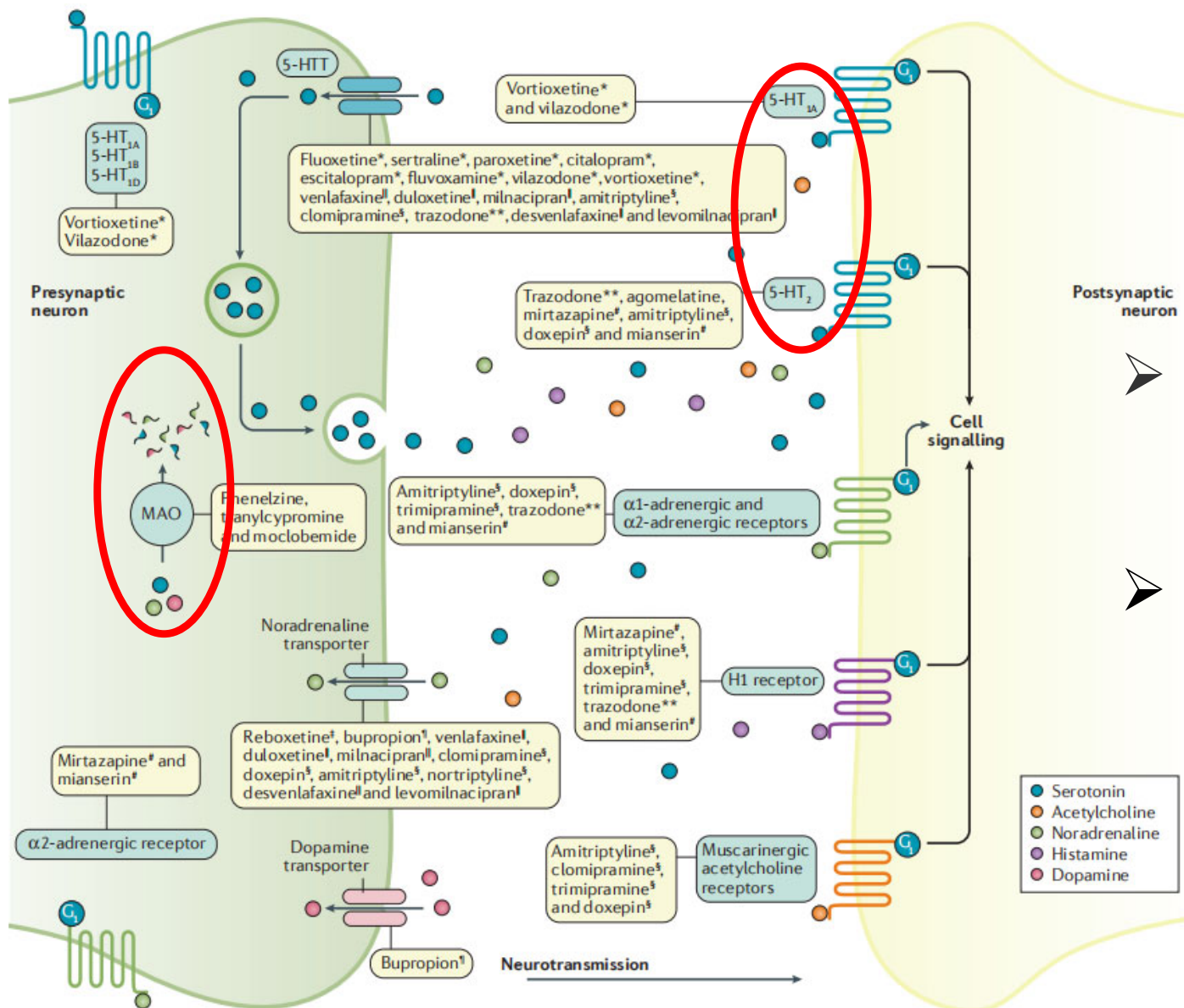
1938

Behavioral therapy



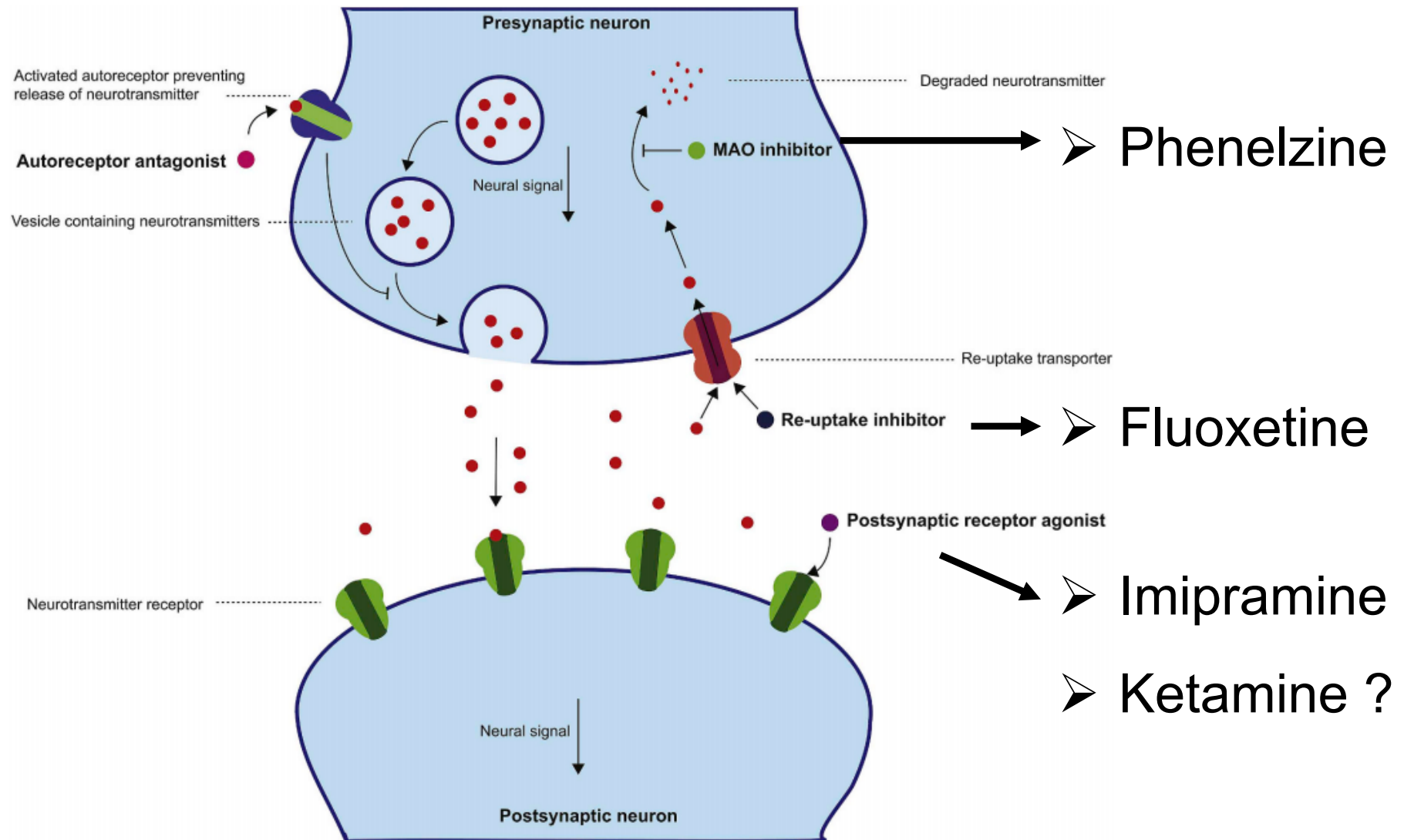
1950s

Antidepressant drugs



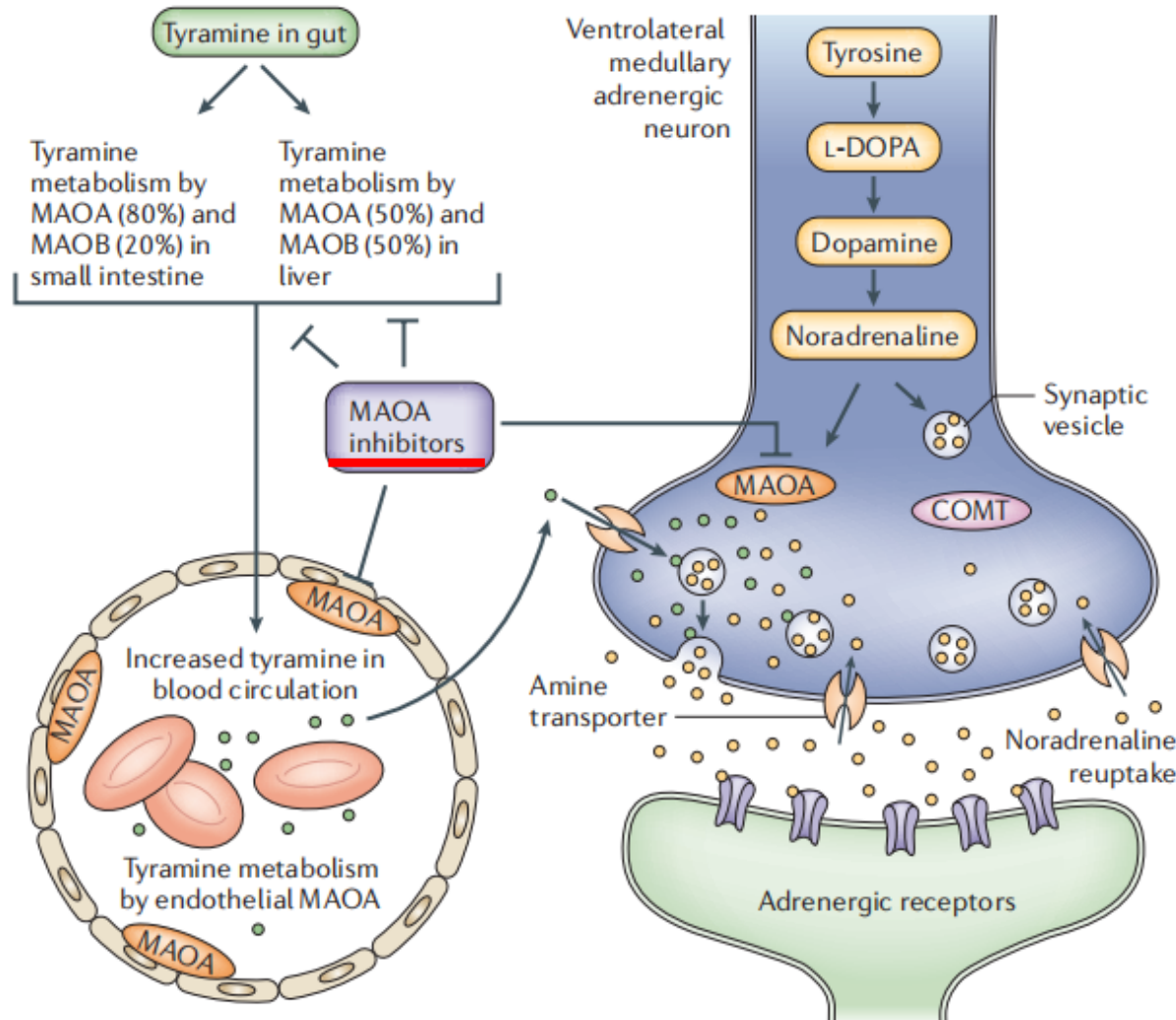
- More than 20 different medicant
- Over 10 billion \$

Active site of antidepressant drugs

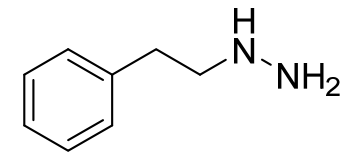


Monoamine oxidase inhibitors

From antituberculosis to antidepressant

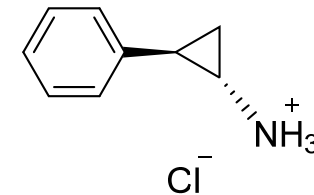


1950s

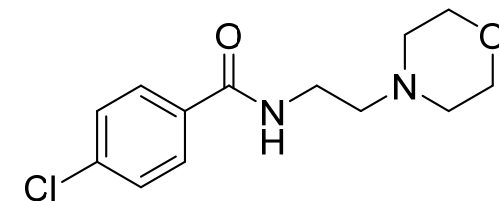


Phenelzine

Side effect

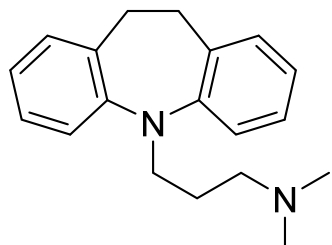


Tranylcypromine



Moclobemide

TCAs



Imipramine

1958

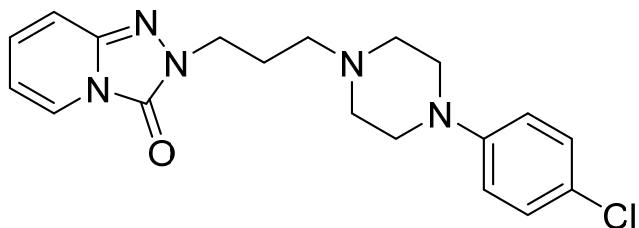
• HCl

Anesthetic

No...

Antidepressant

Yes !



Trazodone

1980s

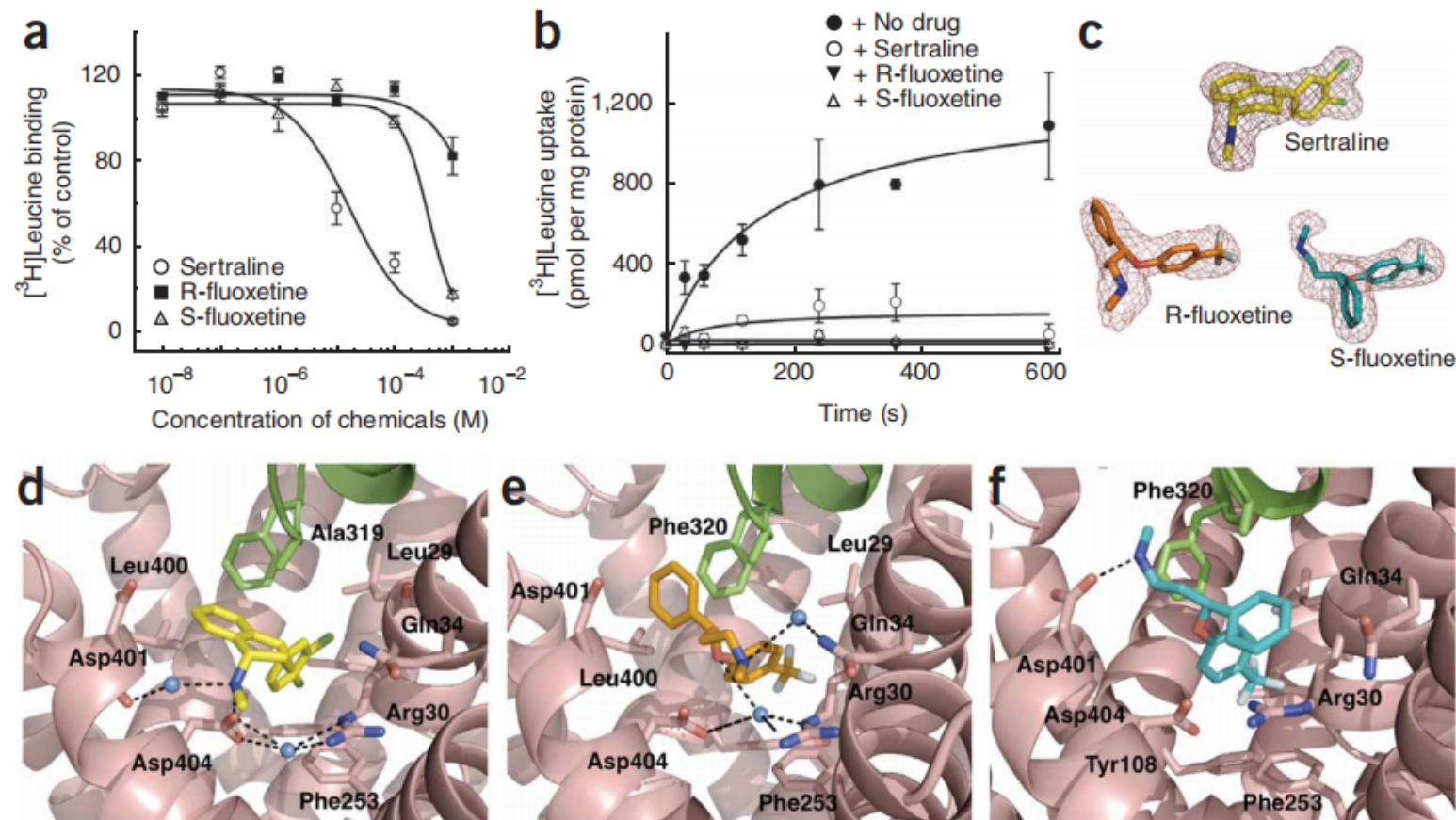
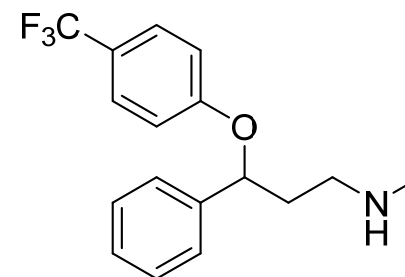
• HCl

Effective: 30%

Inhibit only one channel \longrightarrow Not enough !

Fluoxetine

Best-selling antidepressant drugs

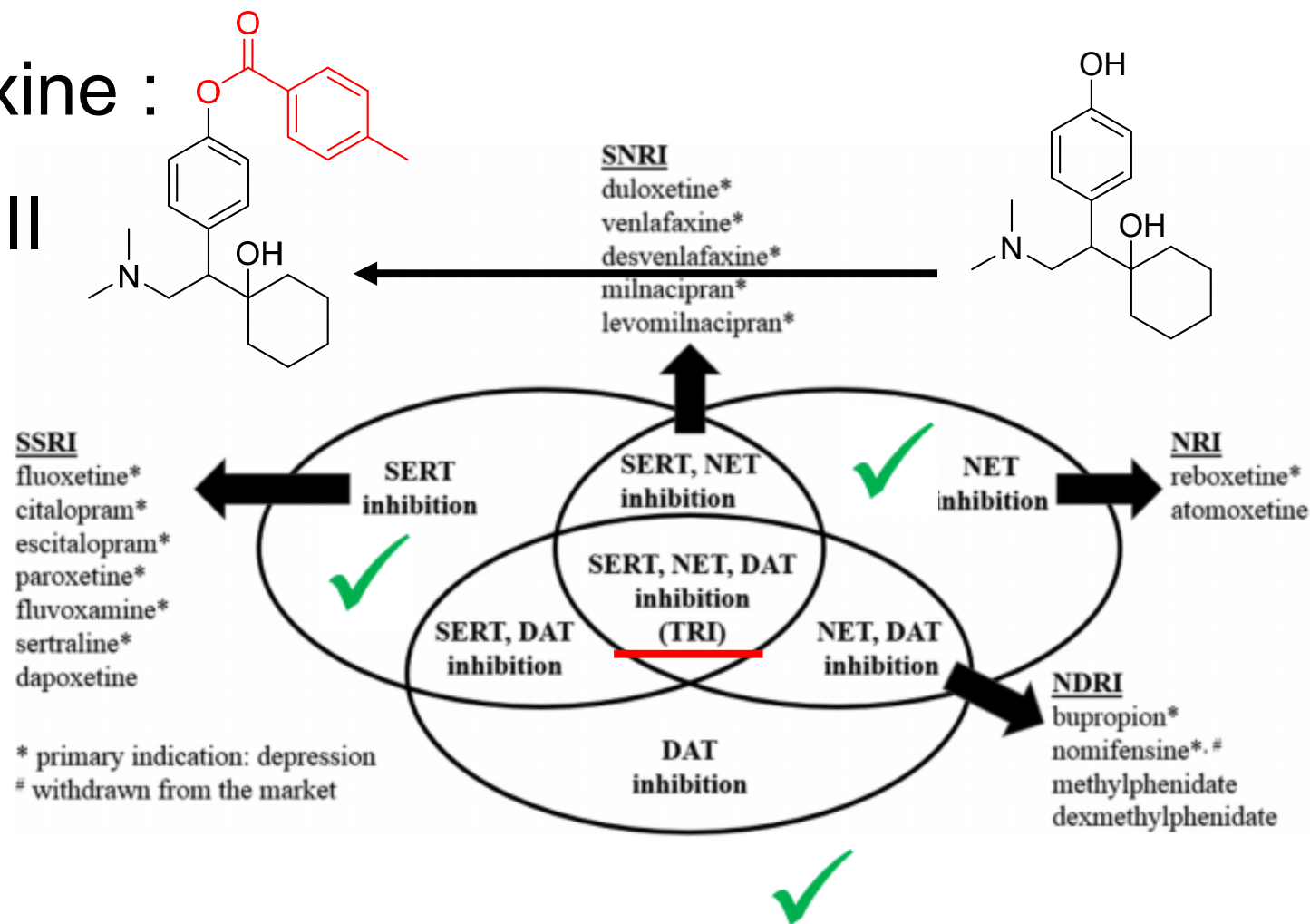


Zheng, Z.; Juan, Z.; Nathan, K. K.; Christopher, J. L.; Maarten, E. A. R.; Da, N. W. *Nat. Struct. Mol. Biol.* **2009**, *16*, 652.

Triple Reuptake Inhibitors

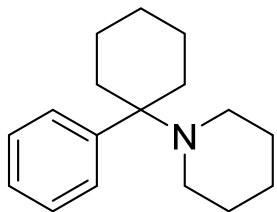
Ansofaxine :

Phase III

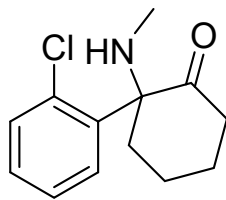


Murugaiah, A. M. S. *J. Med. Chem.* **2018**, 61, 2133.

Ketamine



PCP

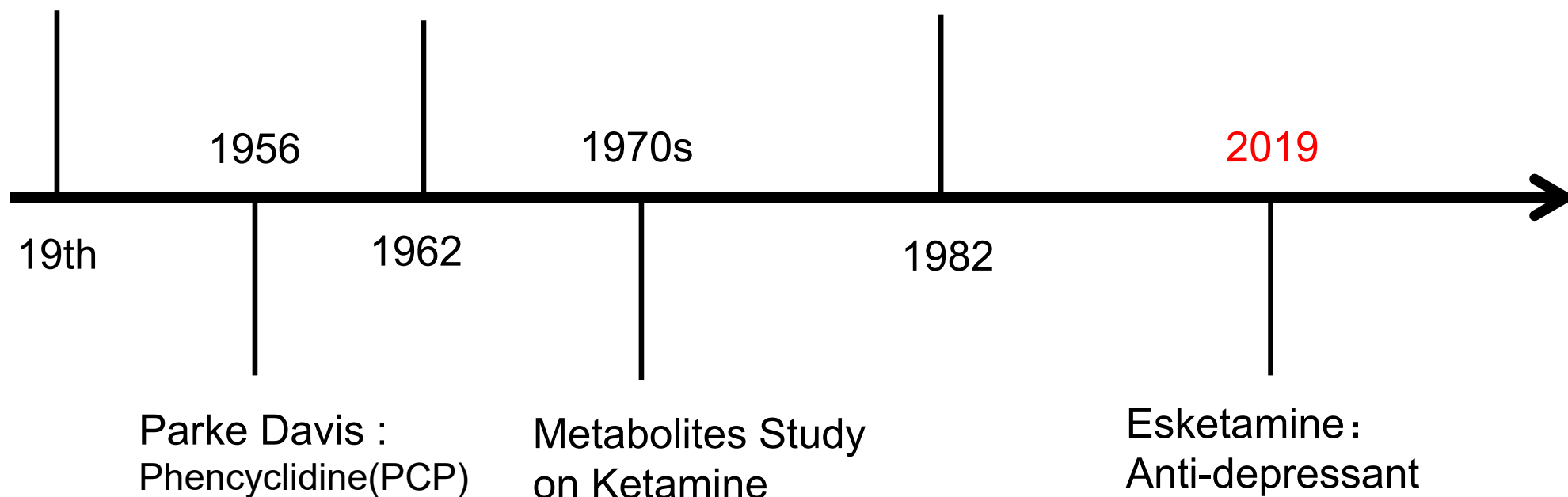


Ketamine

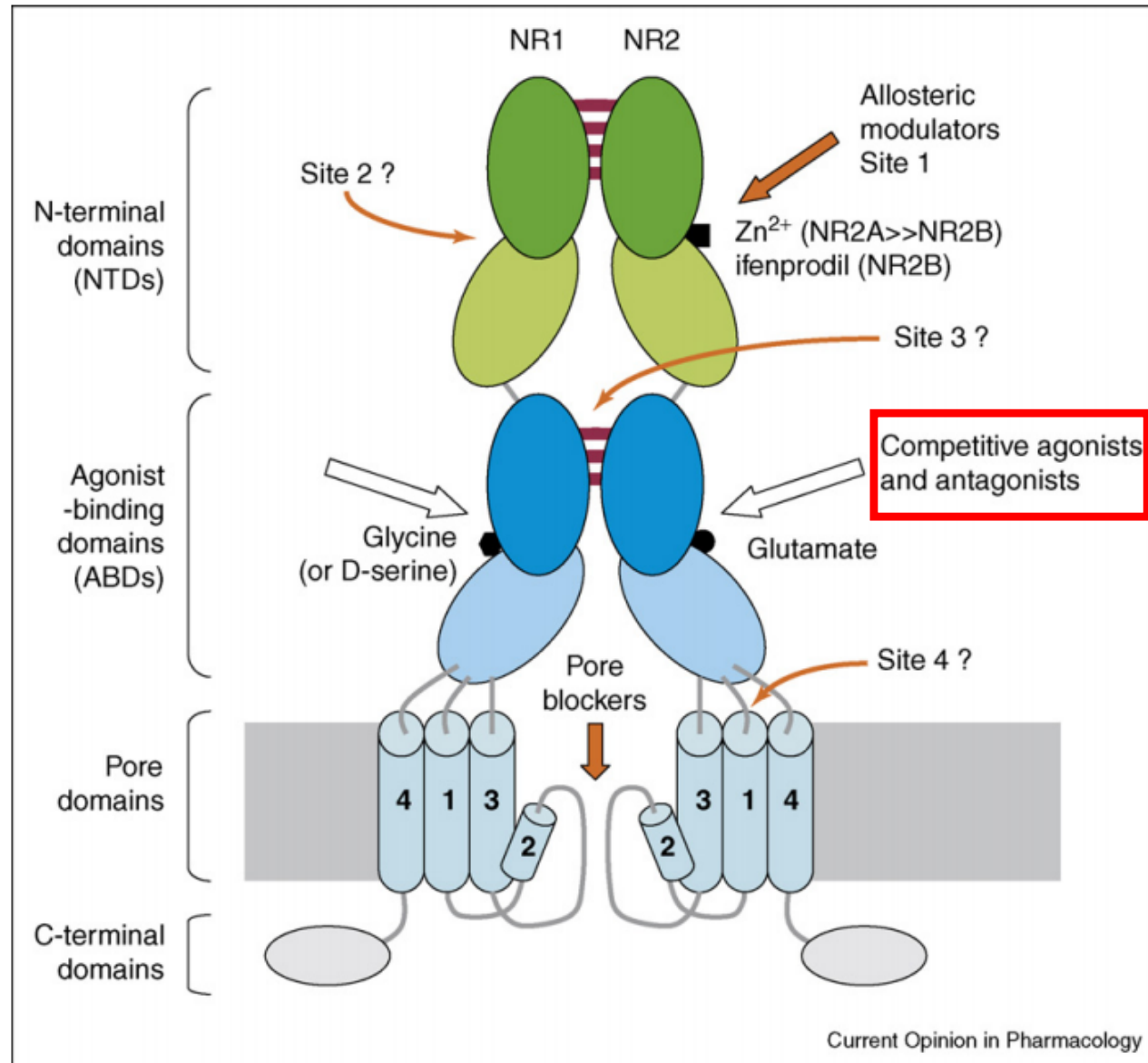
Dawn of
Anesthetic

Calvin Lee Stevens :
CI-581(ketamine)

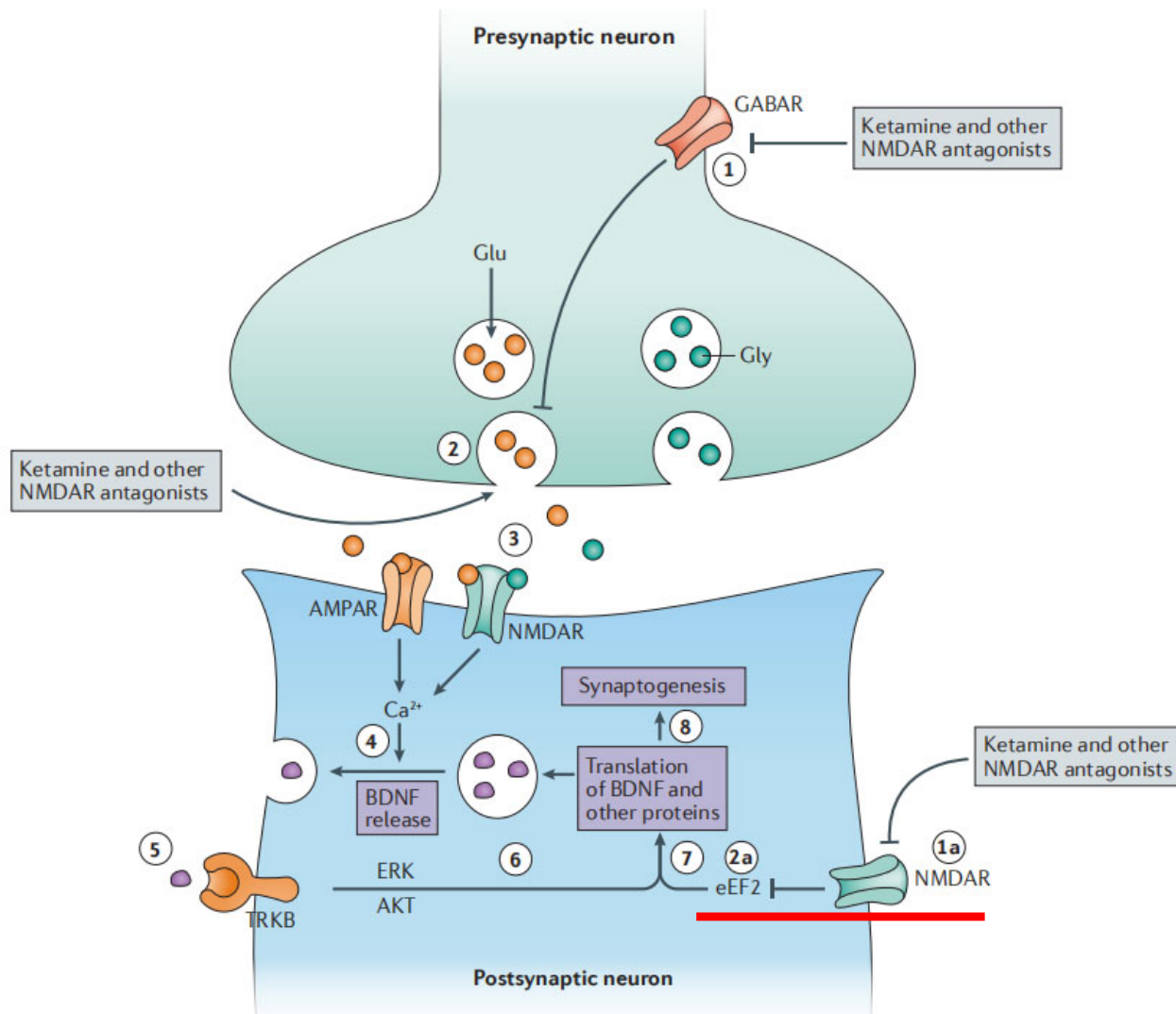
David Lodge :
glutamate N-Methyl-D-
aspartate calcium channel
receptor(NMDA receptor)



Ketamine



Ketamine



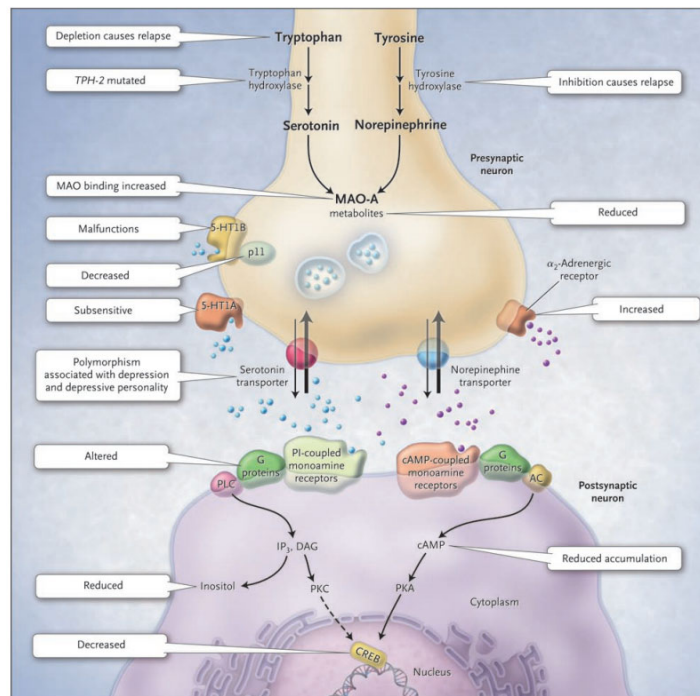
- Rapid-onset
- Low-dose

James, W. M.; Chadi, G. A.; Sanjay J. M. *Nat. Rev. Drug Discov.* **2017**, 16, 472.

Luo Group Meeting (CCME@PKU)

Summary

| Difficulty | | Drug mechanisms | |
|--------------|---------|-----------------|---------|
| | | Clear | Unknown |
| Pathogenesis | Clear | Easy | Hard |
| | Unknown | Hard | Hell |

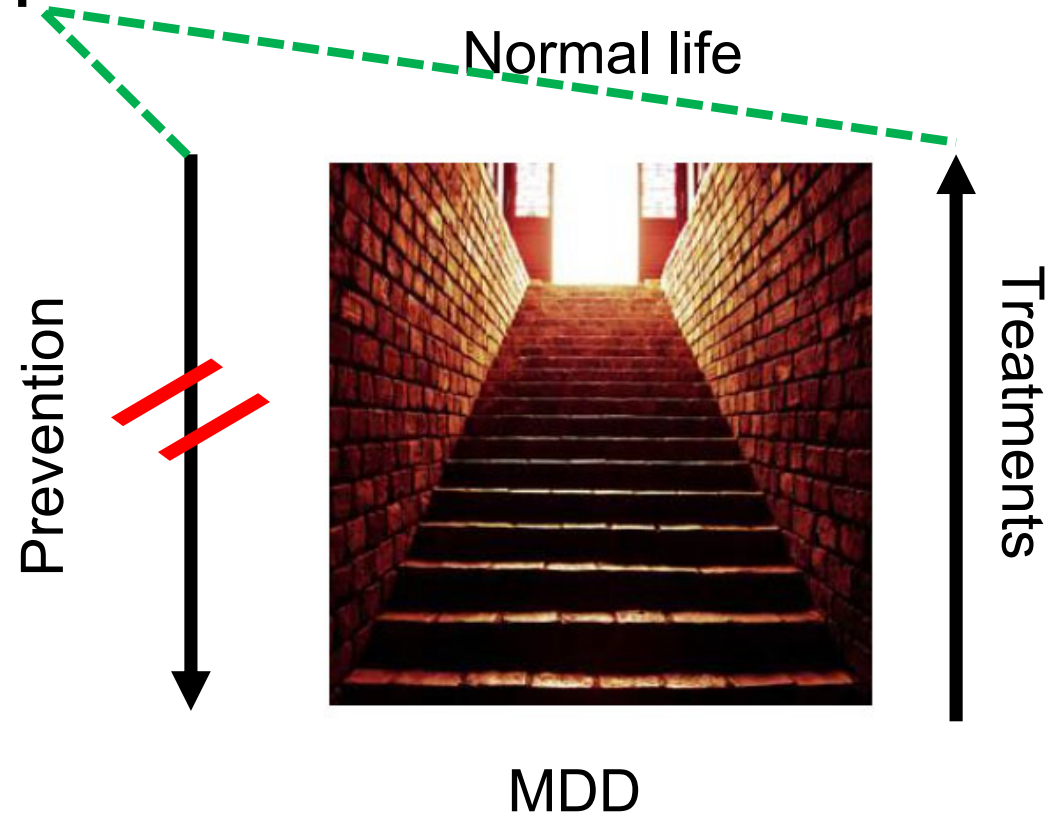


- Mechanism - May be right
- Efficacy - Multiple therapy
- Limitation - Side effect ...

Expectation

Antidepressant drugs :

- Rapid onset
- Higher Efficacy
- Lower Side effect
- Broader spectrum
- Reveal the mechanism



Take care of yourself, and be well !